

Product datasheet for **TA325066**

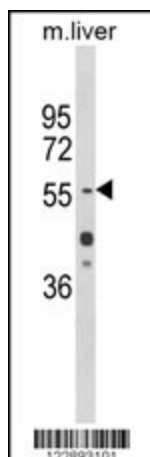
HNF1 alpha (HNF1A) Rabbit Polyclonal Antibody

Product data:

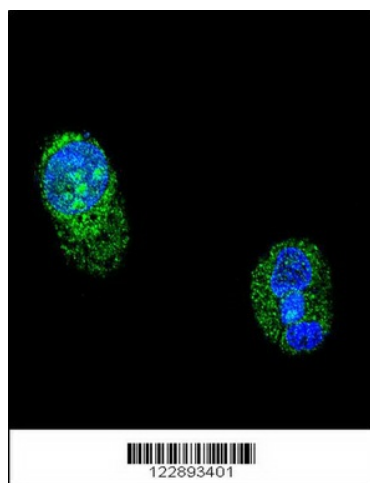
Product Type:	Primary Antibodies
Applications:	IF, WB
Recommended Dilution:	WB: 1:1000, IF: 1:10~50
Reactivity:	Human, Mouse (Predicted: Rat)
Host:	Rabbit
Isotype:	IgG
Clonality:	Polyclonal
Immunogen:	This HNF1A antibody is generated from rabbits immunized with a KLH conjugated synthetic peptide between 177-205 amino acids from the Central region of human HNF1A.
Formulation:	Purified polyclonal antibody supplied in PBS with 0.09% (W/V) sodium azide.
Concentration:	lot specific
Purification:	This antibody is purified through a protein A column, followed by peptide affinity purification.
Conjugation:	Unconjugated
Storage:	Store at -20°C as received.
Stability:	Stable for 12 months from date of receipt.
Predicted Protein Size:	67356 Da
Gene Name:	HNF1 homeobox A
Database Link:	NP_000536 Entrez Gene 21405 Mouse Entrez Gene 24817 Rat Entrez Gene 6927 Human P20823
Synonyms:	HNF-1A; HNF1; IDDM20; LFB1; MODY3; TCF-1; TCF1
Protein Families:	Adult stem cells, Druggable Genome, ES Cell Differentiation/IPS, Transcription Factors
Protein Pathways:	Maturity onset diabetes of the young



[View online »](#)

Product images:

Western blot analysis of HNF1A Antibody (Center) (Cat. #TA325066) in mouse liver tissue lysates (35ug/lane). HNF1A (arrow) was detected using the purified Pab.



Confocal immunofluorescent analysis of HNF1A Antibody (Center) (Cat#TA325066) with HepG2 cell followed by Alexa Fluor[®] 488-conjugated goat anti-rabbit IgG (green). DAPI was used to stain the cell nuclear (blue).