

Product datasheet for **TA325065S**

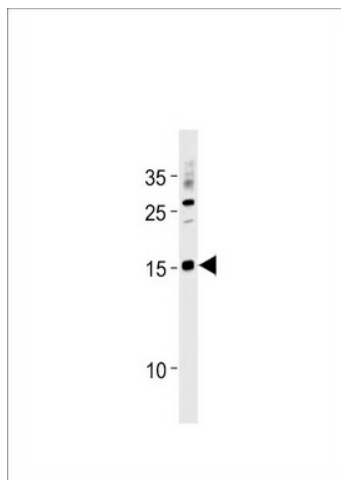
SSNA1 Rabbit Polyclonal Antibody

Product data:

Product Type:	Primary Antibodies
Applications:	WB
Recommended Dilution:	WB: 1:1000
Reactivity:	Human (Predicted: Mouse, Bovine)
Host:	Rabbit
Isotype:	IgG
Clonality:	Polyclonal
Immunogen:	This SSNA1 antibody is generated from rabbits immunized with a KLH conjugated synthetic peptide between 25-53 amino acids from the N-terminal region of human SSNA1.
Formulation:	Purified polyclonal antibody supplied in PBS with 0.09% (W/V) sodium azide.
Concentration:	lot specific
Purification:	This antibody is purified through a protein A column, followed by peptide affinity purification.
Conjugation:	Unconjugated
Storage:	Store at -20°C as received.
Stability:	Stable for 12 months from date of receipt.
Predicted Protein Size:	13596 Da
Gene Name:	SS nuclear autoantigen 1
Database Link:	NP_003722 Entrez Gene 68475 Mouse Entrez Gene 8636 Human O43805
Synonyms:	N14; NA-14; NA14



[View online »](#)

Product images:

SSNA1 Antibody (N-term) (Cat. #TA325065])
western blot analysis in A2058 cell line lysates
(35ug/lane). This demonstrates the SSNA1
antibody detected the SSNA1 protein (arrow).