

## Product datasheet for **TA325064**

### Lactoferrin (LTF) Rabbit Polyclonal Antibody

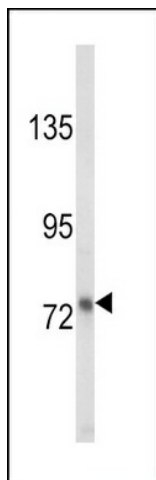
#### Product data:

Product Type:	Primary Antibodies
Applications:	FC, WB
Recommended Dilution:	WB: 1:1000, FC: 1:10~50
Reactivity:	Human, Mouse
Host:	Rabbit
Isotype:	IgG
Clonality:	Polyclonal
Immunogen:	This LTF antibody is generated from rabbits immunized with LTF recombinant protein.
Formulation:	Purified polyclonal antibody supplied in PBS with 0.09% (W/V) sodium azide.
Concentration:	lot specific
Purification:	This antibody is purified through a protein A column, followed by peptide affinity purification.
Conjugation:	Unconjugated
Storage:	Store at -20°C as received.
Stability:	Stable for 12 months from date of receipt.
Predicted Protein Size:	78182 Da
Gene Name:	lactotransferrin
Database Link:	<a href="#">NP_002334</a> <a href="#">Entrez Gene 17002 Mouse</a> <a href="#">Entrez Gene 4057 Human</a> <a href="#">P02788</a>
Synonyms:	GIG12; HEL110; HLF2; LF
Protein Families:	Druggable Genome, Protease, Secreted Protein

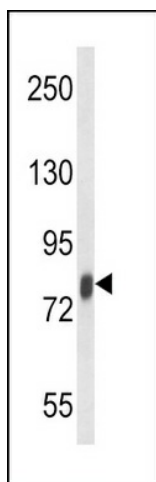


[View online »](#)

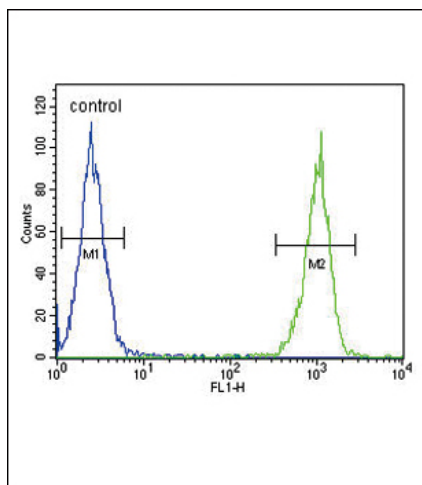
## Product images:



Western blot analysis of LTF Antibody (Cat. #TA325064) in MDA-MB231 cell line lysates (35ug/lane). LTF (arrow) was detected using the purified Pab.



Western blot analysis of LTF Antibody (Cat. #TA325064) in mouse spleen tissue lysates (35ug/lane). LTF (arrow) was detected using the purified Pab.



LTF Antibody (Cat. #TA325064) flow cytometric analysis of MDA-MB231 cells (right histogram) compared to a negative control cell (left histogram). FITC-conjugated goat-anti-rabbit secondary antibodies were used for the analysis.