

Product datasheet for **TA325060S**

Caveolin 2 (CAV2) Rabbit Polyclonal Antibody

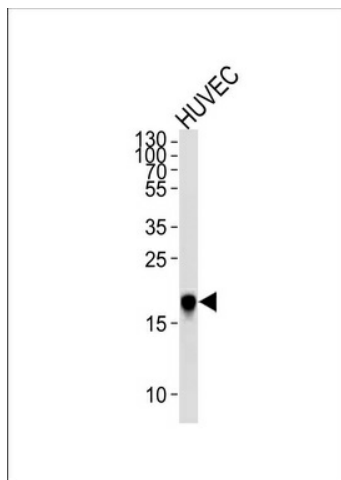
Product data:

Product Type:	Primary Antibodies
Applications:	FC, IF, IHC, WB
Recommended Dilution:	WB: 1:1000, IHC: 1:50~100, FC: 1:10~50, IF: 1:10~50
Reactivity:	Human
Host:	Rabbit
Isotype:	IgG
Clonality:	Polyclonal
Immunogen:	This CAV2 antibody is generated from rabbits immunized with a KLH conjugated synthetic peptide between 11-44 amino acids from the N-terminal region of human CAV2.
Formulation:	Purified polyclonal antibody supplied in PBS with 0.09% (W/V) sodium azide.
Concentration:	lot specific
Purification:	This antibody is prepared by Saturated Ammonium Sulfate (SAS) precipitation followed by dialysis against PBS.
Conjugation:	Unconjugated
Storage:	Store at -20°C as received.
Stability:	Stable for 12 months from date of receipt.
Predicted Protein Size:	18291 Da
Gene Name:	caveolin 2
Database Link:	NP_937855 Entrez Gene 858 Human P51636
Synonyms:	CAV
Protein Families:	Druggable Genome, Transmembrane
Protein Pathways:	Focal adhesion

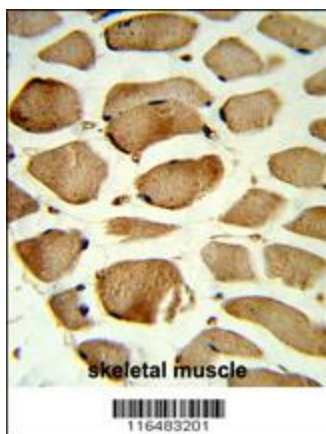


[View online »](#)

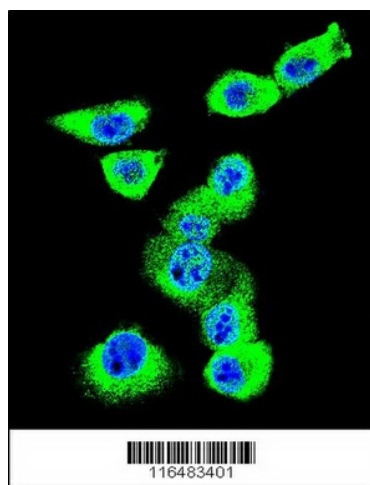
Product images:



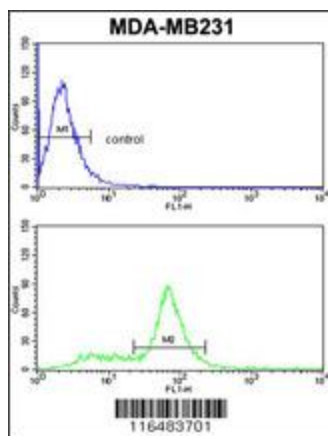
Western blot analysis of lysate from HUVEC cell line, using CAV2 Antibody (N-term) (Cat. # [TA325060]).[TA325060] was diluted at 1:1000 at each lane. A goat anti-rabbit IgG H&L (HRP) at 1:5000 dilution was used as the secondary antibody. Lysate at 35ug per lane.



Formalin-fixed and paraffin-embedded human skeletal muscle reacted with CAV2 Antibody (N-term), which was peroxidase-conjugated to the secondary antibody, followed by DAB staining. This data demonstrates the use of this antibody for immunohistochemistry; clinical relevance has not been evaluated.



Confocal immunofluorescent analysis of CAV2 Antibody (N-term) (Cat#[TA325060]) with MDA-MB231 cell followed by Alexa Fluor 488-conjugated goat anti-rabbit IgG (green). DAPI was used to stain the cell nuclear (blue).



CAV2 Antibody (N-term) (Cat. #[TA325060]) flow cytometric analysis of MDA-MB231 cells (bottom histogram) compared to a negative control cell (top histogram). FITC-conjugated goat-anti-rabbit secondary antibodies were used for the analysis.