

Product datasheet for **TA325059**

Cytochrome P450 2E1 (CYP2E1) Rabbit Polyclonal Antibody

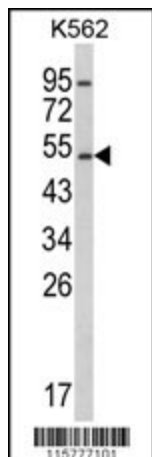
Product data:

| | |
|-------------------------|--|
| Product Type: | Primary Antibodies |
| Applications: | FC, IHC, WB |
| Recommended Dilution: | WB: 1:1000, IHC: 1:50~100, FC: 1:10~50 |
| Reactivity: | Human |
| Host: | Rabbit |
| Isotype: | IgG |
| Clonality: | Polyclonal |
| Immunogen: | This CYP2E1 antibody is generated from rabbits immunized with a KLH conjugated synthetic peptide between 402-429 amino acids from the C-terminal region of human CYP2E1. |
| Formulation: | Purified polyclonal antibody supplied in PBS with 0.09% (W/V) sodium azide. |
| Concentration: | lot specific |
| Purification: | This antibody is prepared by Saturated Ammonium Sulfate (SAS) precipitation followed by dialysis against PBS. |
| Conjugation: | Unconjugated |
| Storage: | Store at -20°C as received. |
| Stability: | Stable for 12 months from date of receipt. |
| Predicted Protein Size: | 56849 Da |
| Gene Name: | cytochrome P450 family 2 subfamily E member 1 |
| Database Link: | NP_000764 Entrez Gene 1571 Human P05181 |
| Synonyms: | CPE1; CYP2E; P450-J; P450C2E |
| Protein Families: | Druggable Genome, P450, Transmembrane |
| Protein Pathways: | Arachidonic acid metabolism, Drug metabolism - cytochrome P450, Linoleic acid metabolism, Metabolic pathways, Metabolism of xenobiotics by cytochrome P450 |

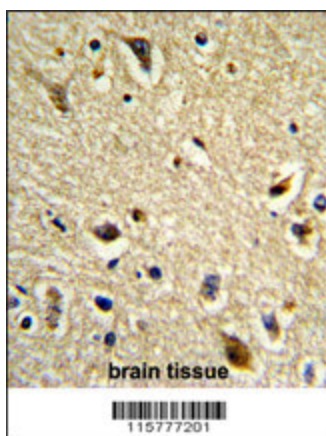


[View online »](#)

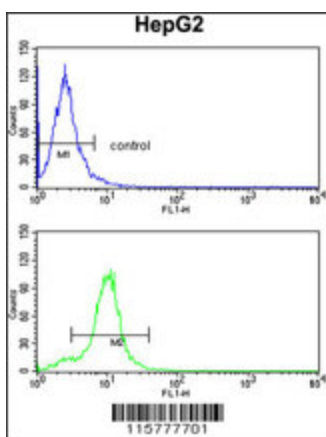
Product images:



Western blot analysis of CYP2E1 Antibody (C-term) (Cat. #TA325059) in K562 cell line lysates (35ug/lane). CYP2E1 (arrow) was detected using the purified Pab.



Formalin-fixed and paraffin-embedded human brain tissue reacted with CYP2E1 Antibody (C-term), which was peroxidase-conjugated to the secondary antibody, followed by DAB staining. This data demonstrates the use of this antibody for immunohistochemistry; clinical relevance has not been evaluated.



CYP2E1 Antibody (C-term) (Cat.#TA325059) flow cytometry analysis of HepG2 cells (bottom histogram) compared to a negative control cell (top histogram). FITC-conjugated goat-anti-rabbit secondary antibodies were used for the analysis.