

Product datasheet for **TA325058S**

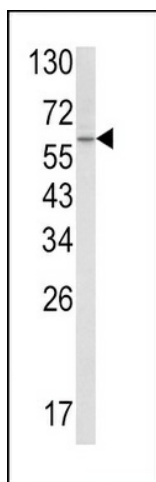
Sterol carrier protein 2 (SCP2) Rabbit Polyclonal Antibody

Product data:

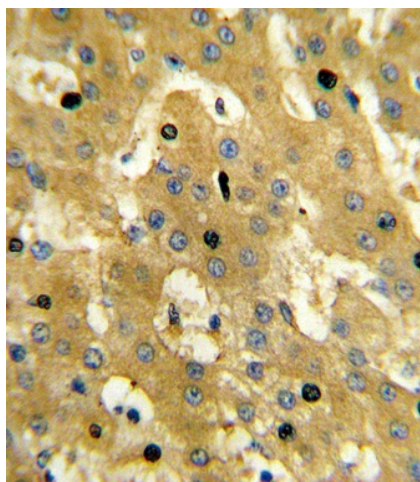
Product Type:	Primary Antibodies
Applications:	FC, IHC, WB
Recommended Dilution:	WB: 1:1000, IHC: 1:10~50, FC: 1:10~50
Reactivity:	Human (Predicted: Mouse, Rat, Bovine, Rabbit)
Host:	Rabbit
Isotype:	IgG
Clonality:	Polyclonal
Immunogen:	This SCP2 antibody is generated from rabbits immunized with a KLH conjugated synthetic peptide between 358-385 amino acids from the Central region of human SCP2.
Formulation:	Purified polyclonal antibody supplied in PBS with 0.09% (W/V) sodium azide.
Concentration:	lot specific
Purification:	This antibody is purified through a protein A column, followed by peptide affinity purification.
Conjugation:	Unconjugated
Storage:	Store at -20°C as received.
Stability:	Stable for 12 months from date of receipt.
Predicted Protein Size:	58994 Da
Gene Name:	sterol carrier protein 2
Database Link:	NP_002970 Entrez Gene 20280 MouseEntrez Gene 25541 RatEntrez Gene 6342 Human P22307
Synonyms:	NLTP; NSL-TP; SCP-2; SCP-CHI; SCP-X; SCPX
Protein Pathways:	Metabolic pathways, PPAR signaling pathway, Primary bile acid biosynthesis



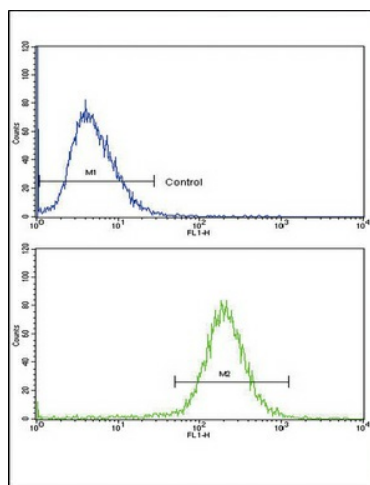
[View online »](#)

Product images:

Western blot analysis of SCP2 Antibody (Center) (Cat. #[TA325058]) in A2058 cell line lysates (35ug/lane). SCP2 (arrow) was detected using the purified Pab.



Formalin-fixed and paraffin-embedded human hepatocarcinoma reacted with SCP2 Antibody (Center), which was peroxidase-conjugated to the secondary antibody, followed by DAB staining. This data demonstrates the use of this antibody for immunohistochemistry; clinical relevance has not been evaluated.



Flow cytometric analysis of HepG2 cells using SCP2 Antibody (Center) (bottom histogram) compared to a negative control cell (top histogram). FITC-conjugated goat-anti-rabbit secondary antibodies were used for the analysis.