

Product datasheet for **TA325057S**

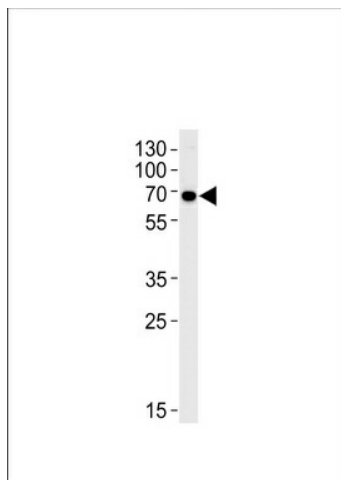
KLC1 Rabbit Polyclonal Antibody

Product data:

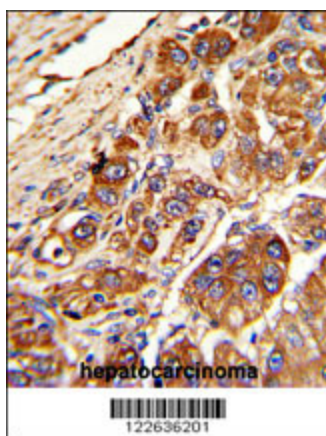
Product Type:	Primary Antibodies
Applications:	FC, IHC, WB
Recommended Dilution:	WB: 1:1000, IHC: 1:50~100, FC: 1:10~50
Reactivity:	Human (Predicted: Rat)
Host:	Rabbit
Isotype:	IgG
Clonality:	Polyclonal
Immunogen:	This KLC1 antibody is generated from rabbits immunized with a KLH conjugated synthetic peptide between 389-415 amino acids from the Central region of human KLC1.
Formulation:	Purified polyclonal antibody supplied in PBS with 0.09% (W/V) sodium azide.
Concentration:	lot specific
Purification:	This antibody is purified through a protein A column, followed by peptide affinity purification.
Conjugation:	Unconjugated
Storage:	Store at -20°C as received.
Stability:	Stable for 12 months from date of receipt.
Predicted Protein Size:	65310 Da
Gene Name:	kinesin light chain 1
Database Link:	NP_891553 Entrez Gene 171041 Rat Entrez Gene 3831 Human Q07866
Synonyms:	KLC; KNS2; KNS2A
Protein Families:	Druggable Genome



[View online »](#)

Product images:


KLC1 Antibody (Center) (Cat.# [TA325057])
western blot analysis in Hela cell line lysates
(35ug/lane). This demonstrates the KLC1 antibody
detected the KLC1 protein (arrow).



Formalin-fixed and paraffin-embedded human
hepatocarcinoma with KLC1 Antibody (Center),
which was peroxidase-conjugated to the
secondary antibody, followed by DAB staining.
This data demonstrates the use of this antibody
for immunohistochemistry; clinical relevance has
not been evaluated.

