

## Product datasheet for **TA325054**

### MICA Rabbit Polyclonal Antibody

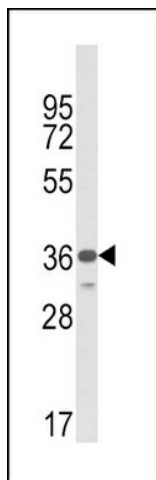
#### Product data:

Product Type:	Primary Antibodies
Applications:	FC, IF, IHC, WB
Recommended Dilution:	WB: 1:1000, IHC: 1:10~50, IF: 1:10~50, FC: 1:10~50
Reactivity:	Human
Host:	Rabbit
Isotype:	IgG
Clonality:	Polyclonal
Immunogen:	This MICA antibody is generated from rabbits immunized with a KLH conjugated synthetic peptide between 68-97 amino acids from the Central region of human MICA.
Formulation:	Purified polyclonal antibody supplied in PBS with 0.09% (W/V) sodium azide.
Concentration:	lot specific
Purification:	This antibody is purified through a protein A column, followed by peptide affinity purification.
Conjugation:	Unconjugated
Storage:	Store at -20°C as received.
Stability:	Stable for 12 months from date of receipt.
Predicted Protein Size:	42915 Da
Gene Name:	MHC class I polypeptide-related sequence A
Database Link:	<a href="#">NP_000238</a> <a href="#">Entrez Gene 100507436 Human</a> <a href="#">Q29983</a>
Synonyms:	MIC-A; PERB11.1

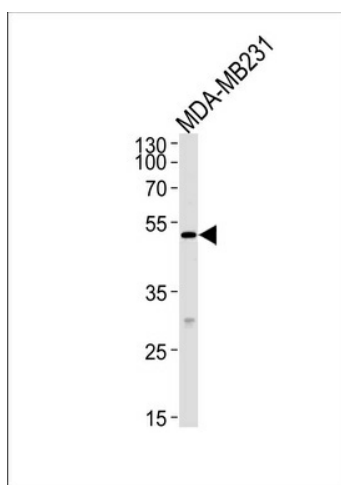


[View online »](#)

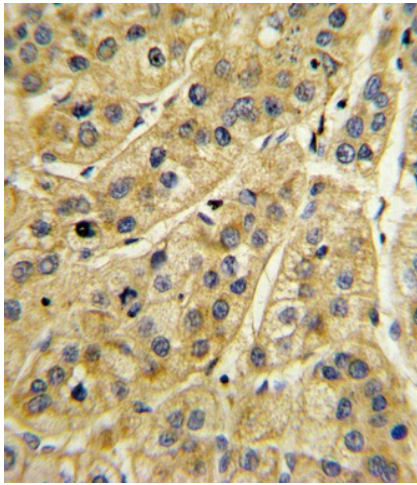
## Product images:



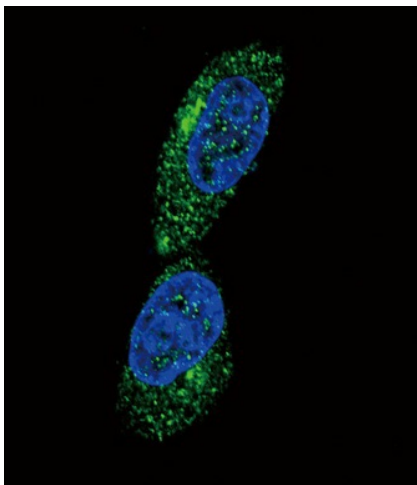
Western blot analysis of MICA Antibody (Center) (Cat. #TA325054) in MDA-MB231 cell line lysates (35ug/lane). MICA (arrow) was detected using the purified Pab.



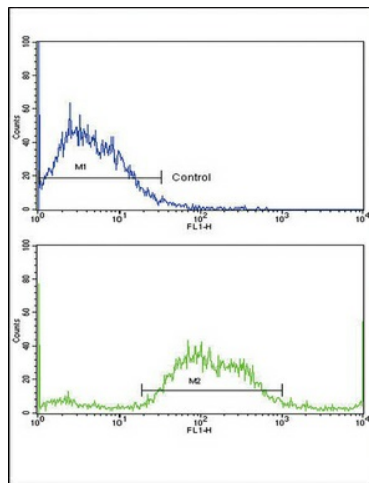
MICA Antibody (Center) (Cat.# TA325054) western blot analysis in MDA-MB-231 cell line lysates (35ug/lane). This demonstrates the MICA antibody detected the MICA protein (arrow).



Formalin-fixed and paraffin-embedded human hepatocarcinoma with MICA Antibody (Center), which was peroxidase-conjugated to the secondary antibody, followed by DAB staining. This data demonstrates the use of this antibody for immunohistochemistry; clinical relevance has not been evaluated.



Confocal immunofluorescent analysis of MICA Antibody (Center) (Cat#TA325054) with MDA-MB231 cell followed by Alexa Fluor<sup>®</sup> 488-conjugated goat anti-rabbit IgG (green). DAPI was used to stain the cell nuclear (blue).



Flow cytometric analysis of SK-Br-3 cells using MICA Antibody (Center) (bottom histogram) compared to a negative control cell (top histogram). FITC-conjugated goat-anti-rabbit secondary antibodies were used for the analysis.