

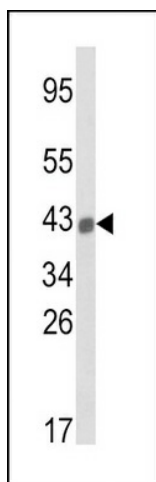
## Product datasheet for **TA325053S**

### HLAB (HLA-B) Rabbit Polyclonal Antibody

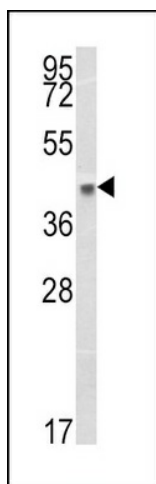
#### Product data:

Product Type:	Primary Antibodies
Applications:	FC, IHC, WB
Recommended Dilution:	WB: 1:1000, IHC: 1:10~50, FC: 1:10~50
Reactivity:	Human
Host:	Rabbit
Isotype:	IgG
Clonality:	Polyclonal
Immunogen:	This HLA-B antibody is generated from rabbits immunized with a KLH conjugated synthetic peptide between 62-90 amino acids from the N-terminal region of human HLA-B.
Formulation:	Purified polyclonal antibody supplied in PBS with 0.09% (W/V) sodium azide.
Concentration:	lot specific
Purification:	This antibody is purified through a protein A column, followed by peptide affinity purification.
Conjugation:	Unconjugated
Storage:	Store at -20°C as received.
Stability:	Stable for 12 months from date of receipt.
Predicted Protein Size:	40428 Da
Gene Name:	major histocompatibility complex, class I, B
Database Link:	<a href="#">NP_005505</a> <a href="#">Entrez Gene 3106 Human</a> <a href="#">P01889</a>
Synonyms:	AS; HLAB; SPDA1
Protein Families:	Transmembrane
Protein Pathways:	Allograft rejection, Antigen processing and presentation, Autoimmune thyroid disease, Cell adhesion molecules (CAMs), Endocytosis, Graft-versus-host disease, Natural killer cell mediated cytotoxicity, Type I diabetes mellitus, Viral myocarditis

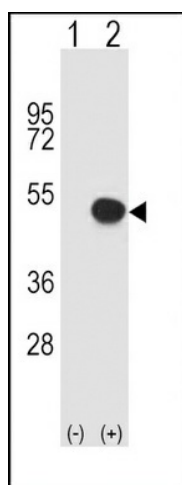

[View online »](#)

**Product images:**


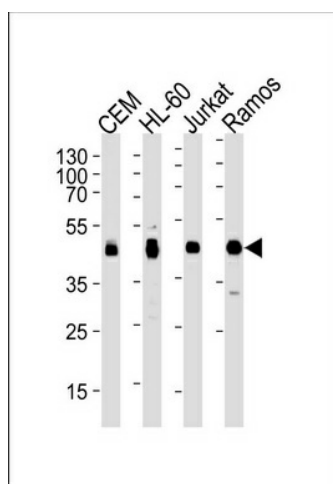
Western blot analysis of HLA-B Antibody (N-term) (Cat. #[TA325053]) in A2058 cell line lysates (35ug/lane). HLA-B (arrow) was detected using the purified Pab.



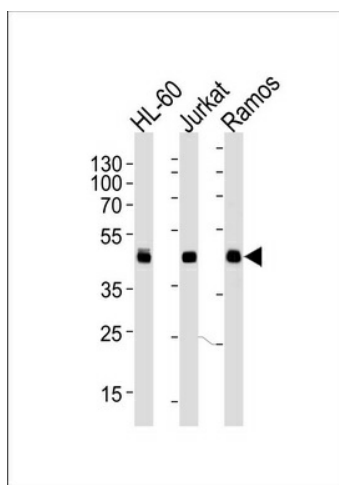
Western blot analysis of HLA-B Antibody (N-term) (Cat. #[TA325053]) in A375 cell line lysates (35ug/lane). HLA-B (arrow) was detected using the purified Pab.



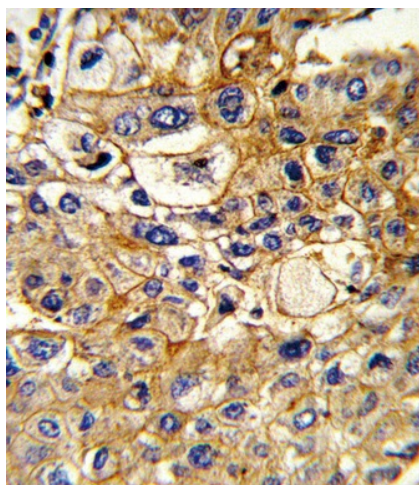
Western blot analysis of HLA-B (arrow) using rabbit polyclonal HLA-B Antibody (N-term) (Cat. # [TA325053]). 293 cell lysates (2 ug/lane) either nontransfected (Lane 1) or transiently transfected (Lane 2) with the HLA-B gene.



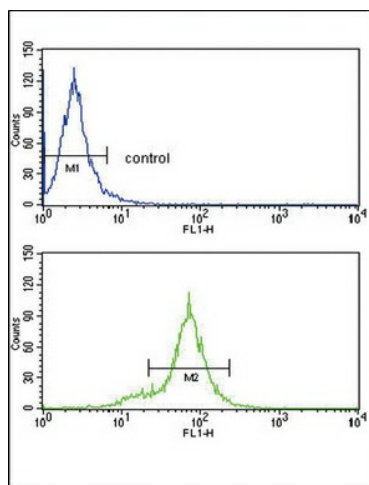
Western blot analysis of lysates from CEM, HL-60, Jurkat, Ramos cell line (from left to right), using HLA-B Antibody (N-term) (Cat. # [TA325053]). [TA325053] was diluted at 1:1000 at each lane. A goat anti-rabbit IgG H&L (HRP) at 1:5000 dilution was used as the secondary antibody. Lysates at 35ug per lane.



Western blot analysis of lysates from HL-60, Jurkat, Ramos cell line (from left to right), using HLA-B Antibody (N-term) (Cat. # [TA325053]). [TA325053] was diluted at 1:1000 at each lane. A goat anti-rabbit IgG H&L (HRP) at 1:5000 dilution was used as the secondary antibody. Lysates at 35ug per lane.



Formalin-fixed and paraffin-embedded human hepatocarcinoma reacted with HLA-B Antibody (N-term), which was peroxidase-conjugated to the secondary antibody, followed by DAB staining. This data demonstrates the use of this antibody for immunohistochemistry; clinical relevance has not been evaluated.



HLA-B Antibody (N-term) (Cat.#[TA325053]) flow cytometry analysis of HepG2 cells (bottom histogram) compared to a negative control cell (top histogram). FITC-conjugated goat-anti-rabbit secondary antibodies were used for the analysis.