

Product datasheet for **TA325050S**

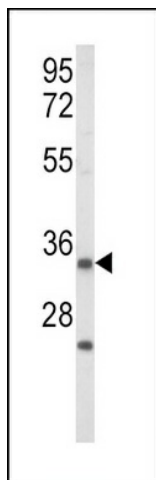
IGFBP2 Rabbit Polyclonal Antibody

Product data:

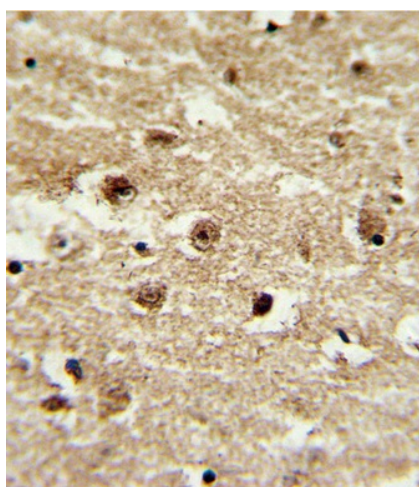
| | |
|-------------------------|--|
| Product Type: | Primary Antibodies |
| Applications: | FC, IF, IHC, WB |
| Recommended Dilution: | WB: 1:1000, IHC: 1:10~50, IF: 1:10~50, FC: 1:10~50 |
| Reactivity: | Human (Predicted: Bovine, Pig) |
| Host: | Rabbit |
| Isotype: | IgG |
| Clonality: | Polyclonal |
| Immunogen: | This IGFBP2 antibody is generated from rabbits immunized with a KLH conjugated synthetic peptide between 277-305 amino acids from the C-terminal region of human IGFBP2. |
| Formulation: | Purified polyclonal antibody supplied in PBS with 0.09% (W/V) sodium azide. |
| Concentration: | lot specific |
| Purification: | This antibody is purified through a protein A column, followed by peptide affinity purification. |
| Conjugation: | Unconjugated |
| Storage: | Store at -20°C as received. |
| Stability: | Stable for 12 months from date of receipt. |
| Predicted Protein Size: | 34814 Da |
| Gene Name: | insulin like growth factor binding protein 2 |
| Database Link: | NP_000588 Entrez Gene 3485 Human P18065 |
| Synonyms: | IBP2; IGF-BP53 |
| Protein Families: | Adult stem cells, Druggable Genome, Embryonic stem cells, ES Cell Differentiation/IPS, Secreted Protein |



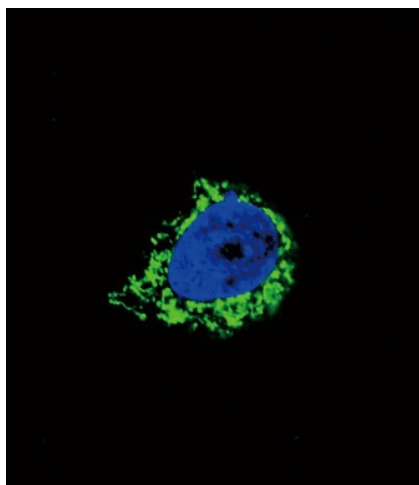
[View online »](#)

Product images:

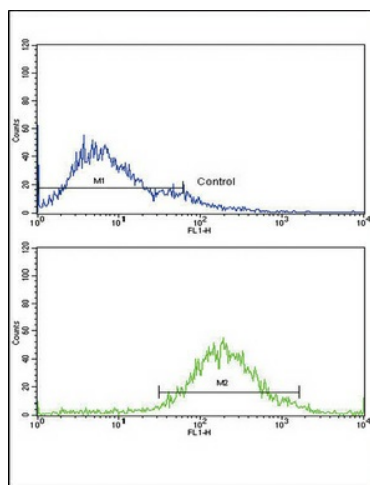
Western blot analysis of IGFBP2 Antibody (C-term) (Cat. #[TA325050]) in Jurkat cell line lysates (35ug/lane). IGFBP2 (arrow) was detected using the purified Pab. (2ug/ml)



Formalin-fixed and paraffin-embedded human brain tissue with IGFBP2 Antibody (C-term), which was peroxidase-conjugated to the secondary antibody, followed by DAB staining. This data demonstrates the use of this antibody for immunohistochemistry; clinical relevance has not been evaluated.



Confocal immunofluorescent analysis of IGFBP2 Antibody (C-term) (Cat. #[TA325050]) with A549 cell followed by Alexa Fluor 488-conjugated goat anti-rabbit IgG (green). DAPI was used to stain the cell nuclear (blue).



Flow cytometric analysis of jurkat cells using IGFBP2 Antibody (C-term) (bottom histogram) compared to a negative control cell (top histogram). FITC-conjugated goat-anti-rabbit secondary antibodies were used for the analysis.