

Product datasheet for **TA325050**

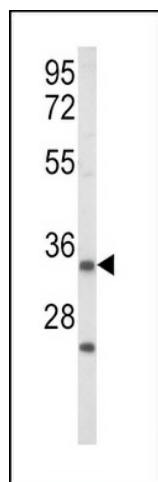
IGFBP2 Rabbit Polyclonal Antibody

Product data:

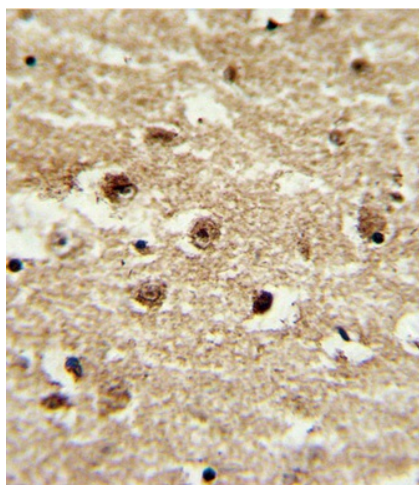
Product Type:	Primary Antibodies
Applications:	FC, IF, IHC, WB
Recommended Dilution:	WB: 1:1000, IHC: 1:10~50, IF: 1:10~50, FC: 1:10~50
Reactivity:	Human (Predicted: Bovine, Pig)
Host:	Rabbit
Isotype:	IgG
Clonality:	Polyclonal
Immunogen:	This IGFBP2 antibody is generated from rabbits immunized with a KLH conjugated synthetic peptide between 277-305 amino acids from the C-terminal region of human IGFBP2.
Formulation:	Purified polyclonal antibody supplied in PBS with 0.09% (W/V) sodium azide.
Concentration:	lot specific
Purification:	This antibody is purified through a protein A column, followed by peptide affinity purification.
Conjugation:	Unconjugated
Storage:	Store at -20°C as received.
Stability:	Stable for 12 months from date of receipt.
Predicted Protein Size:	34814 Da
Gene Name:	insulin like growth factor binding protein 2
Database Link:	NP_000588 Entrez Gene 3485 Human P18065
Synonyms:	IBP2; IGF-BP53
Protein Families:	Adult stem cells, Druggable Genome, Embryonic stem cells, ES Cell Differentiation/IPS, Secreted Protein



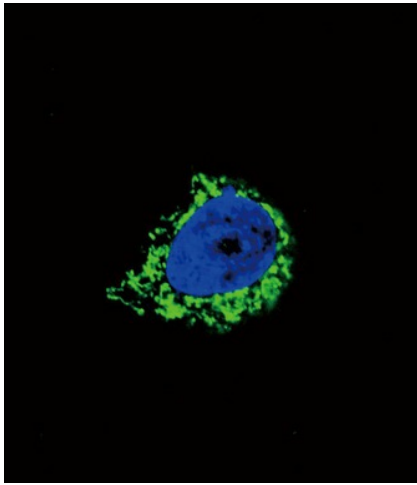
[View online »](#)

Product images:

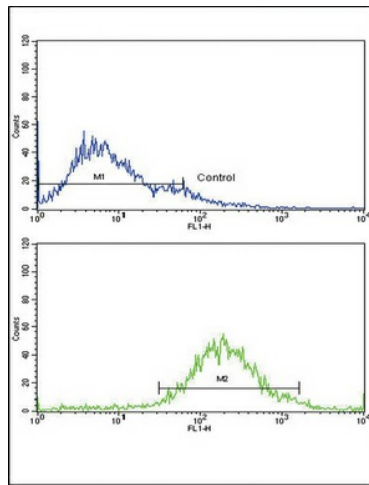
Western blot analysis of IGFBP2 Antibody (C-term) (Cat. #TA325050) in Jurkat cell line lysates (35ug/lane). IGFBP2 (arrow) was detected using the purified Pab. (2ug/ml)



Formalin-fixed and paraffin-embedded human brain tissue with IGFBP2 Antibody (C-term), which was peroxidase-conjugated to the secondary antibody, followed by DAB staining. This data demonstrates the use of this antibody for immunohistochemistry; clinical relevance has not been evaluated.



Confocal immunofluorescent analysis of IGFBP2 Antibody (C-term) (Cat. #TA325050) with A549 cell followed by Alexa Fluor 488-conjugated goat anti-rabbit IgG (green). DAPI was used to stain the cell nuclear (blue).



Flow cytometric analysis of jurkat cells using IGFBP2 Antibody (C-term) (bottom histogram) compared to a negative control cell (top histogram). FITC-conjugated goat-anti-rabbit secondary antibodies were used for the analysis.