

## Product datasheet for **TA325049S**

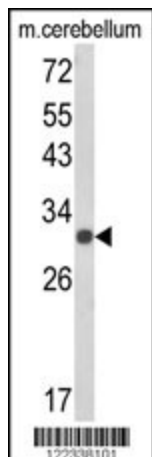
### USF2 Rabbit Polyclonal Antibody

#### Product data:

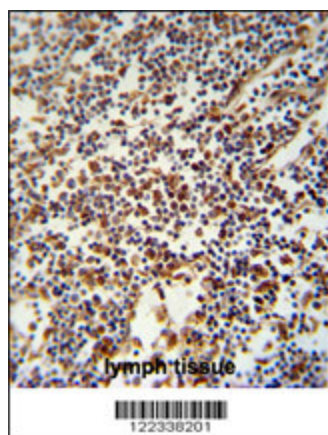
Product Type:	Primary Antibodies
Applications:	IHC, WB
Recommended Dilution:	WB: 1:1000, IHC: 1:50~100
Reactivity:	Human, Mouse (Predicted: Rat)
Host:	Rabbit
Isotype:	IgG
Clonality:	Polyclonal
Immunogen:	This USF2 antibody is generated from rabbits immunized with a KLH conjugated synthetic peptide between 218-246 amino acids from the Central region of human USF2.
Formulation:	Purified polyclonal antibody supplied in PBS with 0.09% (W/V) sodium azide.
Concentration:	lot specific
Purification:	This antibody is purified through a protein A column, followed by peptide affinity purification.
Conjugation:	Unconjugated
Storage:	Store at -20°C as received.
Stability:	Stable for 12 months from date of receipt.
Predicted Protein Size:	36955 Da
Gene Name:	upstream transcription factor 2, c-fos interacting
Database Link:	<a href="#">NP_003358</a> <a href="#">Entrez Gene 22282 Mouse</a> <a href="#">Entrez Gene 81817 Rat</a> <a href="#">Entrez Gene 7392 Human</a> <a href="#">Q15853</a>
Synonyms:	bHLHb12; FIP
Protein Families:	Druggable Genome, Transcription Factors



[View online »](#)

**Product images:**

Western blot analysis of USF2 Antibody (Center) (Cat. #[TA325049]) in mouse cerebellum tissue lysates (35ug/lane).USF2 (arrow) was detected using the purified Pab.



USF2 Antibody (Center) (Cat. #[TA325049]) immunohistochemistry analysis in formalin fixed and paraffin embedded human lymph tissue followed by peroxidase conjugation of the secondary antibody and DAB staining. This data demonstrates the use of the USF2 Antibody (Center) for immunohistochemistry. Clinical relevance has not been evaluated.