

Product datasheet for **TA325048S**

RNF166 Rabbit Polyclonal Antibody

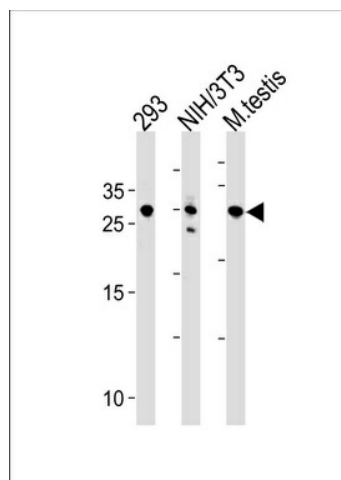
Product data:

Product Type:	Primary Antibodies
Applications:	WB
Recommended Dilution:	WB: 1:1000
Reactivity:	Human, Mouse (Predicted: Rat)
Host:	Rabbit
Isotype:	IgG
Clonality:	Polyclonal
Immunogen:	This RNF166 antibody is generated from rabbits immunized with a KLH conjugated synthetic peptide between 71-97 amino acids from the Central region of human RNF166.
Formulation:	Purified polyclonal antibody supplied in PBS with 0.09% (W/V) sodium azide.
Concentration:	lot specific
Purification:	This antibody is purified through a protein A column, followed by peptide affinity purification.
Conjugation:	Unconjugated
Storage:	Store at -20°C as received.
Stability:	Stable for 12 months from date of receipt.
Predicted Protein Size:	26122 Da
Gene Name:	ring finger protein 166
Database Link:	NP_849163 Entrez Gene 68718 Mouse Entrez Gene 365022 Rat Entrez Gene 115992 Human Q96A37
Synonyms:	MGC2647; MGC14381
Protein Families:	Druggable Genome



[View online »](#)

Product images:



RNF166 Antibody (Center) (Cat. #TA325048)
western blot analysis in 293, mouse NIH/3T3 cell
line and testis tissue lysates (35ug/lane). This
demonstrates the RNF166 antibody detected the
RNF166 protein (arrow).