

Product datasheet for **TA325047**

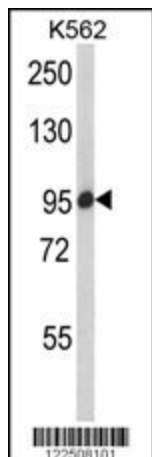
SCAP Rabbit Polyclonal Antibody

Product data:

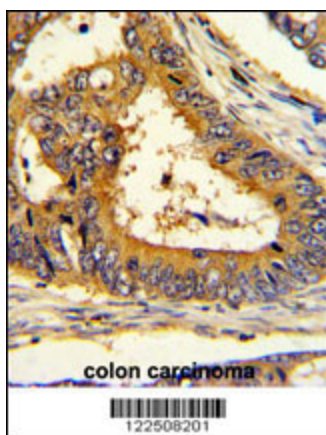
Product Type:	Primary Antibodies
Applications:	FC, IF, IHC, WB
Recommended Dilution:	WB: 1:1000, IHC: 1:50~100, FC: 1:10~50, IF: 1:100
Reactivity:	Human (Predicted: Mouse, Rat, Bovine, Pig)
Host:	Rabbit
Isotype:	IgG
Clonality:	Polyclonal
Immunogen:	This SCAP antibody is generated from rabbits immunized with a KLH conjugated synthetic peptide between 604-632 amino acids from the Central region of human SCAP.
Formulation:	Purified polyclonal antibody supplied in PBS with 0.09% (W/V) sodium azide.
Concentration:	lot specific
Purification:	This antibody is purified through a protein A column, followed by peptide affinity purification.
Conjugation:	Unconjugated
Storage:	Store at -20°C as received.
Stability:	Stable for 12 months from date of receipt.
Predicted Protein Size:	139729 Da
Gene Name:	SREBF chaperone
Database Link:	NP_036367 Entrez Gene 235623 Mouse Entrez Gene 301024 Rat Entrez Gene 22937 Human Q12770
Synonyms:	KIAA0199
Protein Families:	Druggable Genome, Transcription Factors, Transmembrane



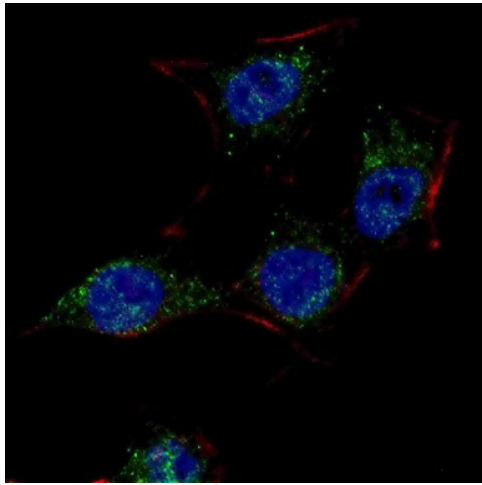
[View online »](#)

Product images:

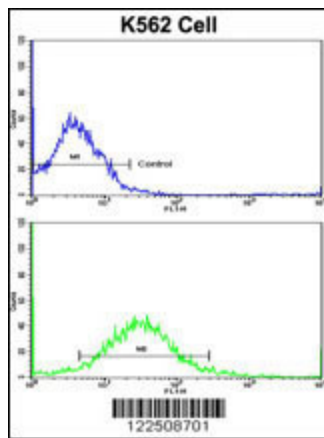
Western blot analysis of SCAP Antibody (Center) (Cat. #TA325047) in K562 cell line lysates (35ug/lane). SCAP (arrow) was detected using the purified Pab.



Formalin-fixed and paraffin-embedded human colon carcinoma with SCAP Antibody (Center), which was peroxidase-conjugated to the secondary antibody, followed by DAB staining. This data demonstrates the use of this antibody for immunohistochemistry; clinical relevance has not been evaluated.



Fluorescent confocal image of HeLa cells stained with SCAP (Center) antibody. HeLa cells were fixed with 4% PFA (20 min), permeabilized with Triton X-100 (0.2%, 30 min). Cells were then incubated with TA325047 SCAP (Center) primary antibody (1:100, 2 h at room temperature). For secondary antibody, Alexa Fluor[®] 488 conjugated donkey anti-rabbit antibody (green) was used (1:1000, 1h). Nuclei were counterstained with Hoechst 33342 (blue) (10 μ g/ml, 5 min).



Flow cytometric analysis of K562 cells using SCAP Antibody (Center) (bottom histogram) compared to a negative control cell (top histogram). FITC-conjugated goat-anti-rabbit secondary antibodies were used for the analysis.