

## Product datasheet for **TA325046S**

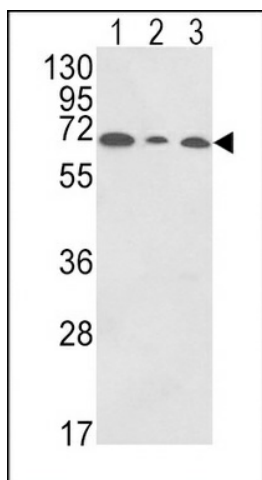
### PIGR Rabbit Polyclonal Antibody

#### Product data:

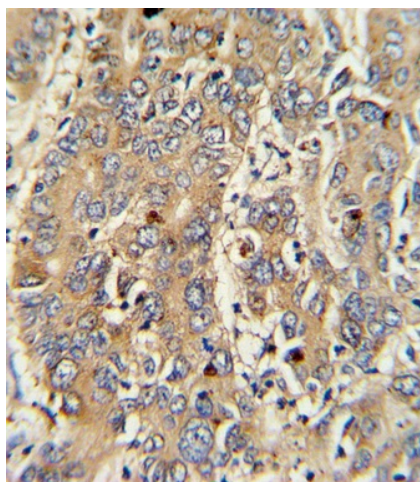
Product Type:	Primary Antibodies
Applications:	FC, IF, IHC, WB
Recommended Dilution:	WB: 1:1000, IHC: 1:10~50, IF: 1:10~50, FC: 1:10~50
Reactivity:	Human
Host:	Rabbit
Isotype:	IgG
Clonality:	Polyclonal
Immunogen:	This PIGR antibody is generated from rabbits immunized with a KLH conjugated synthetic peptide between 646-672 amino acids from the C-terminal region of human PIGR.
Formulation:	Purified polyclonal antibody supplied in PBS with 0.09% (W/V) sodium azide.
Concentration:	lot specific
Purification:	This antibody is purified through a protein A column, followed by peptide affinity purification.
Conjugation:	Unconjugated
Storage:	Store at -20°C as received.
Stability:	Stable for 12 months from date of receipt.
Predicted Protein Size:	83284 Da
Gene Name:	polymeric immunoglobulin receptor
Database Link:	<a href="#">NP_002635</a> <a href="#">Entrez Gene 5284 Human</a> <a href="#">P01833</a>
Synonyms:	FLJ22667; MGC125361; MGC125362
Protein Families:	Druggable Genome, Secreted Protein, Transmembrane



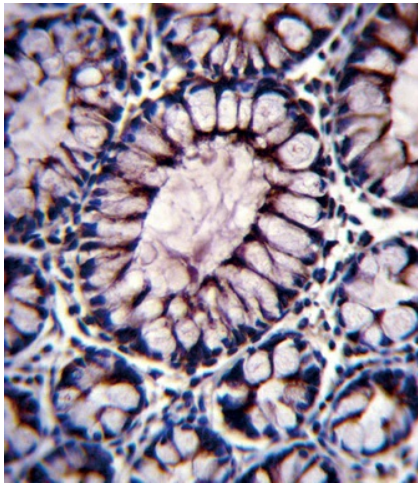
[View online »](#)

**Product images:**

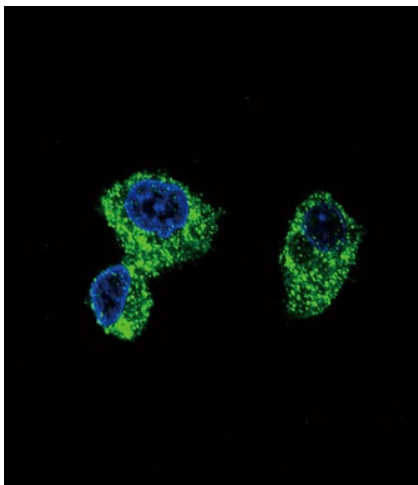
Western blot analysis of PIGR Antibody (C-term) (Cat. #[TA325046]) in HepG2 (lane 1), K562 (lane 2), HL-60 (lane 3) cell line lysates (35ug/lane).PIGR (arrow) was detected using the purified Pab.



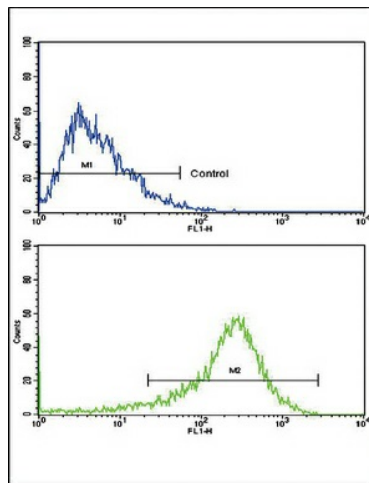
Formalin-fixed and paraffin-embedded human hepatocarcinoma with PIGR Antibody (C-term), which was peroxidase-conjugated to the secondary antibody, followed by DAB staining. This data demonstrates the use of this antibody for immunohistochemistry; clinical relevance has not been evaluated.



PIGR Antibody (C-term) (Cat. # [TA325046]) immunohistochemistry analysis in formalin fixed and paraffin embedded human colon tissue followed by peroxidase conjugation of the secondary antibody and DAB staining. This data demonstrates the use of PIGR Antibody (C-term) for immunohistochemistry. Clinical relevance has not been evaluated.



Confocal immunofluorescent analysis of PIGR Antibody (C-term) (Cat#[TA325046]) with HepG2 cell followed by Alexa Fluor 488-conjugated goat anti-rabbit IgG (green). DAPI was used to stain the cell nuclear (blue).



Flow cytometric analysis of HepG2 cells using PIGR Antibody (C-term) (bottom histogram) compared to a negative control cell (top histogram). FITC-conjugated goat-anti-rabbit secondary antibodies were used for the analysis.