

## Product datasheet for **TA325045S**

### alpha Adaptin (AP2A2) Rabbit Polyclonal Antibody

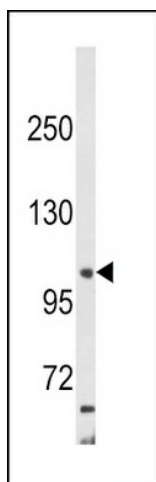
#### Product data:

Product Type:	Primary Antibodies
Applications:	FC, IHC, WB
Recommended Dilution:	WB: 1:1000, IHC: 1:10~50, FC: 1:10~50
Reactivity:	Human
Host:	Rabbit
Isotype:	IgG
Clonality:	Polyclonal
Immunogen:	This AP2A2 antibody is generated from rabbits immunized with a KLH conjugated synthetic peptide between 610-637 amino acids from the Central region of human AP2A2.
Formulation:	Purified polyclonal antibody supplied in PBS with 0.09% (W/V) sodium azide.
Concentration:	lot specific
Purification:	This antibody is purified through a protein A column, followed by peptide affinity purification.
Conjugation:	Unconjugated
Storage:	Store at -20°C as received.
Stability:	Stable for 12 months from date of receipt.
Predicted Protein Size:	103960 Da
Gene Name:	adaptor related protein complex 2 alpha 2 subunit
Database Link:	<a href="#">NP_036437</a> <a href="#">Entrez Gene 161 Human</a> <a href="#">O94973</a>
Synonyms:	ADTAB; CLAPA2; HIP-9; HIP9; HYPJ
Protein Pathways:	Endocytosis, Huntington's disease

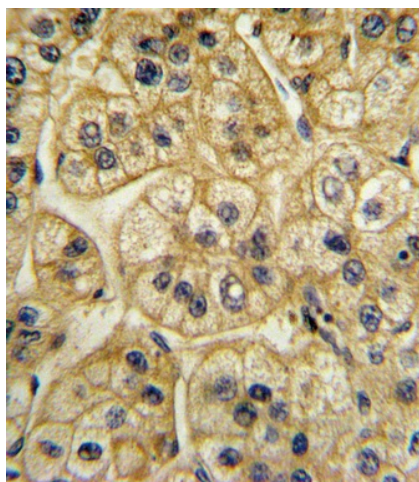


[View online »](#)

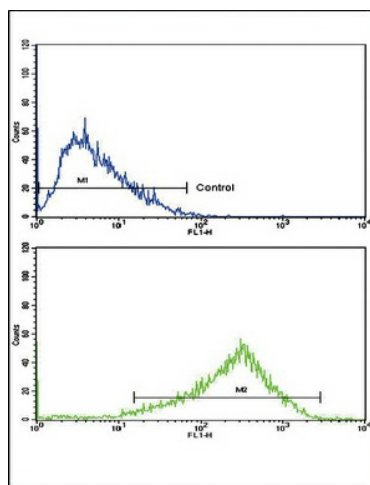
## Product images:



Western blot analysis of AP2A2 Antibody (Center) (Cat. #TA325045) in HepG2 cell line lysates (35ug/lane). AP2A2 (arrow) was detected using the purified Pab.



Formalin-fixed and paraffin-embedded human hepatocarcinoma with AP2A2 Antibody (Center), which was peroxidase-conjugated to the secondary antibody, followed by DAB staining. This data demonstrates the use of this antibody for immunohistochemistry; clinical relevance has not been evaluated.



Flow cytometric analysis of HepG2 cells using AP2A2 Antibody (Center) (bottom histogram) compared to a negative control cell (top histogram). FITC-conjugated goat-anti-rabbit secondary antibodies were used for the analysis.