

## Product datasheet for **TA325042**

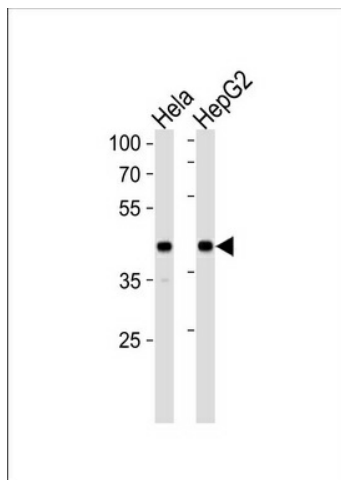
### LRPAP1 Rabbit Polyclonal Antibody

#### Product data:

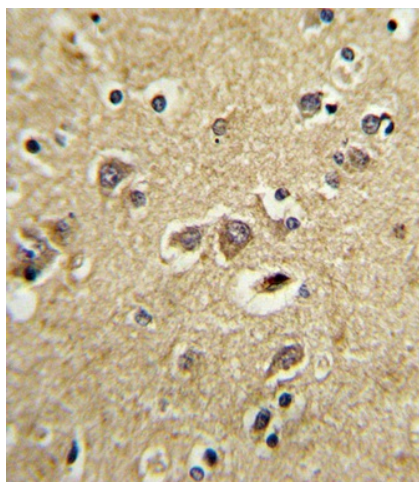
Product Type:	Primary Antibodies
Applications:	FC, IHC, WB
Recommended Dilution:	WB: 1:1000, IHC: 1:10~50, FC: 1:10~50
Reactivity:	Human
Host:	Rabbit
Isotype:	IgG
Clonality:	Polyclonal
Immunogen:	This LRPAP1 antibody is generated from rabbits immunized with a KLH conjugated synthetic peptide between 281-309 amino acids from the C-terminal region of human LRPAP1.
Formulation:	Purified polyclonal antibody supplied in PBS with 0.09% (W/V) sodium azide.
Concentration:	lot specific
Purification:	This antibody is purified through a protein A column, followed by peptide affinity purification.
Conjugation:	Unconjugated
Storage:	Store at -20°C as received.
Stability:	Stable for 12 months from date of receipt.
Predicted Protein Size:	41466 Da
Gene Name:	LDL receptor related protein associated protein 1
Database Link:	<a href="#">NP_002328</a> <a href="#">Entrez Gene 4043 Human</a> <a href="#">P30533</a>
Synonyms:	A2MRAP; A2RAP; alpha-2-MRAP; HBP44; MRAP; MYP23; RAP
Protein Families:	Druggable Genome, Transmembrane



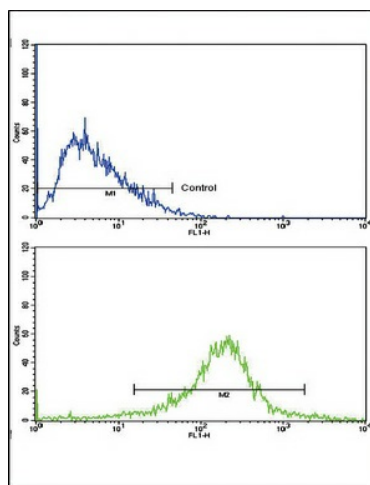
[View online »](#)

**Product images:**

LRPAP1 Antibody (C-term) (Cat. #TA325042) western blot analysis in HeLa, HepG2 cell line lysates (35ug/lane). This demonstrates the LRPAP1 antibody detected the LRPAP1 protein (arrow).



Formalin-fixed and paraffin-embedded human brain tissue with LRPAP1 Antibody (C-term), which was peroxidase-conjugated to the secondary antibody, followed by DAB staining. This data demonstrates the use of this antibody for immunohistochemistry; clinical relevance has not been evaluated.



Flow cytometric analysis of HepG2 cells using LRPAP1 Antibody (C-term) (bottom histogram) compared to a negative control cell (top histogram). FITC-conjugated goat-anti-rabbit secondary antibodies were used for the analysis.