

## Product datasheet for **TA325041S**

### CCHCR1 Rabbit Polyclonal Antibody

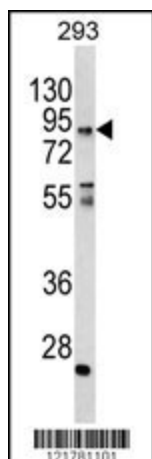
#### Product data:

Product Type:	Primary Antibodies
Applications:	FC, IF, IHC, WB
Recommended Dilution:	WB: 1:1000, IHC: 1:50~100, FC: 1:10~50, IF: 1:10~50
Reactivity:	Human
Host:	Rabbit
Isotype:	IgG
Clonality:	Polyclonal
Immunogen:	This CCHCR1 antibody is generated from rabbits immunized with a KLH conjugated synthetic peptide between 599-627 amino acids from the Central region of human CCHCR1.
Formulation:	Purified polyclonal antibody supplied in PBS with 0.09% (W/V) sodium azide.
Concentration:	lot specific
Purification:	This antibody is purified through a protein A column, followed by peptide affinity purification.
Conjugation:	Unconjugated
Storage:	Store at -20°C as received.
Stability:	Stable for 12 months from date of receipt.
Predicted Protein Size:	88671 Da
Gene Name:	coiled-coil alpha-helical rod protein 1
Database Link:	<a href="#">NP_061925</a> <a href="#">Entrez Gene 54535 Human</a> <a href="#">Q8TD31</a>
Synonyms:	C6orf18; HCR; SBP



[View online »](#)

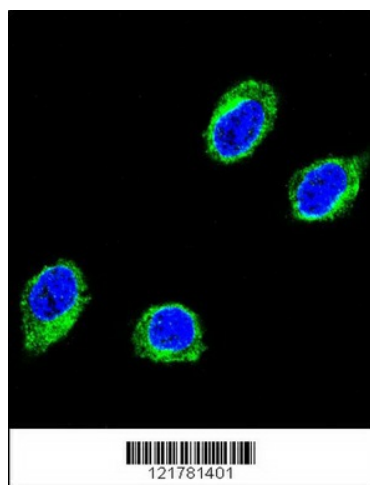
## Product images:



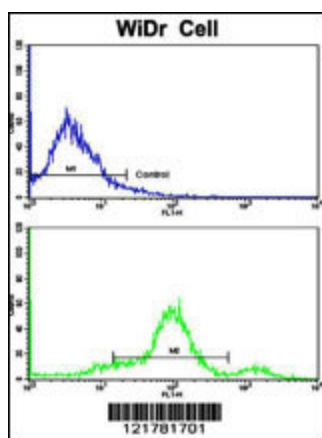
Western blot analysis of CCHCR1 Antibody (Center) (Cat. #TA325041) in 293 cell line lysates (35ug/lane). CCHCR1 (arrow) was detected using the purified Pab.



Formalin-fixed and paraffin-embedded human skeletal muscle reacted with CCHCR1 Antibody (Center), which was peroxidase-conjugated to the secondary antibody, followed by DAB staining. This data demonstrates the use of this antibody for immunohistochemistry; clinical relevance has not been evaluated.



Confocal immunofluorescent analysis of CCHCR1 Antibody (Center) (Cat. #TA325041) with 293 cell followed by Alexa Fluor 488-conjugated goat anti-rabbit IgG (green). DAPI was used to stain the cell nuclear (blue).



Flow cytometric analysis of widr cells using CCHCR1 Antibody (Center) (bottom histogram) compared to a negative control cell (top histogram). FITC-conjugated goat-anti-rabbit secondary antibodies were used for the analysis.