

## Product datasheet for **TA325039**

### NRAMP1 (SLC11A1) Rabbit Polyclonal Antibody

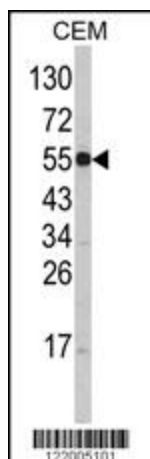
#### Product data:

Product Type:	Primary Antibodies
Applications:	WB
Recommended Dilution:	WB: 1:1000
Reactivity:	Human
Host:	Rabbit
Isotype:	IgG
Clonality:	Polyclonal
Immunogen:	This SLC11A1 antibody is generated from rabbits immunized with a KLH conjugated synthetic peptide between 250-276 amino acids from the Central region of human SLC11A1.
Formulation:	Purified polyclonal antibody supplied in PBS with 0.09% (W/V) sodium azide.
Concentration:	lot specific
Purification:	This antibody is purified through a protein A column, followed by peptide affinity purification.
Conjugation:	Unconjugated
Storage:	Store at -20°C as received.
Stability:	Stable for 12 months from date of receipt.
Predicted Protein Size:	59872 Da
Gene Name:	solute carrier family 11 member 1
Database Link:	<a href="#">NP_000569</a> <a href="#">Entrez Gene 6556 Human</a> <a href="#">P49279</a>
Synonyms:	LSH; NRAMP; NRAMP1
Protein Families:	Transmembrane
Protein Pathways:	Lysosome



[View online »](#)

## Product images:



Western blot analysis of SLC11A1 Antibody (Center) (Cat. #TA325039) in CEM cell line lysates (35ug/lane). SLC11A1 (arrow) was detected using the purified Pab.