

## Product datasheet for **TA325038**

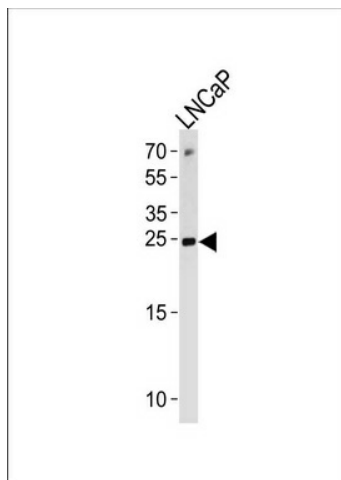
### TCTP (TPT1) Rabbit Polyclonal Antibody

#### Product data:

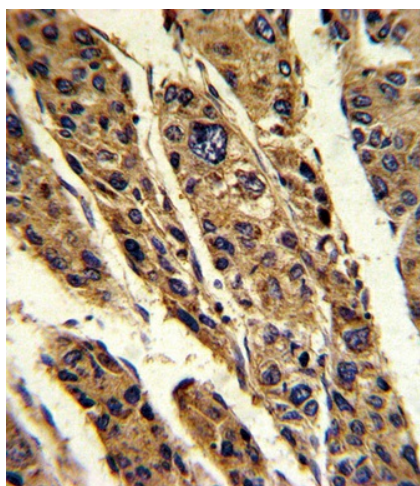
Product Type:	Primary Antibodies
Applications:	FC, IHC, WB
Recommended Dilution:	WB: 1:1000, IHC: 1:10~50, FC: 1:10~50
Reactivity:	Human (Predicted: Bovine, Pig, Rabbit)
Host:	Rabbit
Isotype:	IgG
Clonality:	Polyclonal
Immunogen:	This TPT1 antibody is generated from rabbits immunized with a KLH conjugated synthetic peptide between 85-113 amino acids from the Central region of human TPT1.
Formulation:	Purified polyclonal antibody supplied in PBS with 0.09% (W/V) sodium azide.
Concentration:	lot specific
Purification:	This antibody is prepared by Saturated Ammonium Sulfate (SAS) precipitation followed by dialysis against PBS.
Conjugation:	Unconjugated
Storage:	Store at -20°C as received.
Stability:	Stable for 12 months from date of receipt.
Predicted Protein Size:	19595 Da
Gene Name:	tumor protein, translationally-controlled 1
Database Link:	<a href="#">NP_003286</a> <a href="#">Entrez Gene 7178 Human</a> <a href="#">P13693</a>
Synonyms:	HRF; p02; p23; TCTP



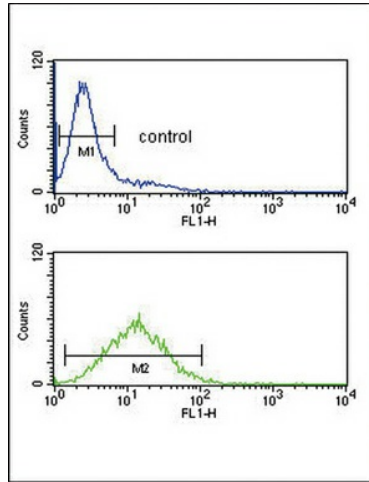
[View online »](#)

**Product images:**

TPT1 Antibody (Center) (Cat. #TA325038) western blot analysis in LNCaP cell line lysates (35ug/lane). This demonstrates the TPT1 antibody detected the TPT1 protein (arrow).



Formalin-fixed and paraffin-embedded human hepatocarcinoma reacted with TPT1 Antibody (Center), which was peroxidase-conjugated to the secondary antibody, followed by DAB staining. This data demonstrates the use of this antibody for immunohistochemistry; clinical relevance has not been evaluated.



TPT1 Antibody (Center) (Cat. #TA325038) flow cytometric analysis of Jurkat cells (bottom histogram) compared to a negative control cell (top histogram). FITC-conjugated goat-anti-rabbit secondary antibodies were used for the analysis.