

Product datasheet for **TA325037**

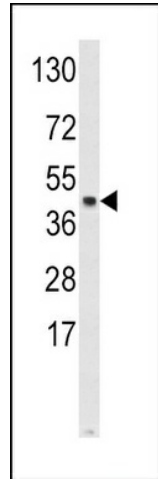
SKP2 Rabbit Polyclonal Antibody

Product data:

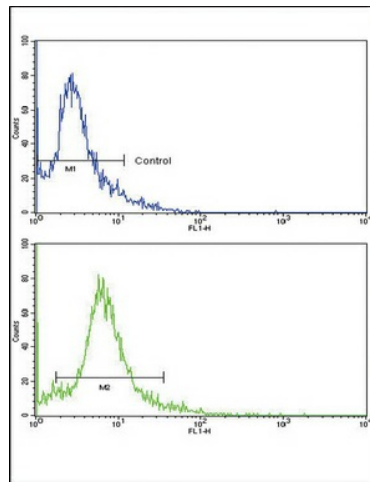
Product Type:	Primary Antibodies
Applications:	FC, WB
Recommended Dilution:	WB: 1:1000, FC: 1:10~50
Reactivity:	Human
Host:	Rabbit
Isotype:	IgG
Clonality:	Polyclonal
Immunogen:	This SKP2 antibody is generated from rabbits immunized with a KLH conjugated synthetic peptide between 156-185 amino acids from the Central region of human SKP2.
Formulation:	Purified polyclonal antibody supplied in PBS with 0.09% (W/V) sodium azide.
Concentration:	lot specific
Purification:	This antibody is prepared by Saturated Ammonium Sulfate (SAS) precipitation followed by dialysis against PBS.
Conjugation:	Unconjugated
Storage:	Store at -20°C as received.
Stability:	Stable for 12 months from date of receipt.
Predicted Protein Size:	47761 Da
Gene Name:	S-phase kinase-associated protein 2, E3 ubiquitin protein ligase
Database Link:	NP_116026 Entrez Gene 6502 Human Q13309
Synonyms:	FBL1; FBXL1; FLB1; p45
Protein Families:	Druggable Genome
Protein Pathways:	Acute myeloid leukemia, Apoptosis, Cell cycle, Oocyte meiosis, p53 signaling pathway, Pathways in cancer, Progesterone-mediated oocyte maturation, Small cell lung cancer, Ubiquitin mediated proteolysis



[View online »](#)

Product images:

Western blot analysis of SKP2 Antibody (Center) (Cat. #TA325037) in HeLa cell line lysates (35ug/lane). SKP2 (arrow) was detected using the purified Pab.



Flow cytometric analysis of HeLa cells using SKP2 Antibody (Center) (bottom histogram) compared to a negative control cell (top histogram). FITC-conjugated goat-anti-rabbit secondary antibodies were used for the analysis.