

Product datasheet for **TA325036**

Protein Phosphatase 1 beta (PPP1CB) Rabbit Polyclonal Antibody

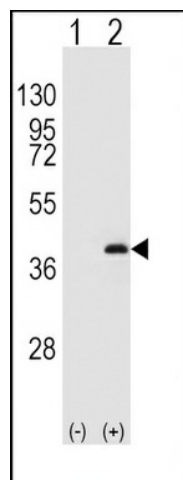
Product data:

Product Type:	Primary Antibodies
Applications:	IF, WB
Recommended Dilution:	IF: 1:10~50, WB: 1:1000
Reactivity:	Human (Predicted: Mouse, Rat, Bovine, Chicken, Pig, Rabbit, Xenopus)
Host:	Rabbit
Isotype:	IgG
Clonality:	Polyclonal
Immunogen:	This Protein Phosphatase 1 beta (PPP1CB) antibody is generated from rabbits immunized with a KLH conjugated synthetic peptide between 286-315 amino acids from the C-terminal region of human Protein Phosphatase 1 beta (PPP1CB).
Formulation:	Purified polyclonal antibody supplied in PBS with 0.09% (W/V) sodium azide.
Concentration:	lot specific
Purification:	This antibody is prepared by Saturated Ammonium Sulfate (SAS) precipitation followed by dialysis against PBS.
Conjugation:	Unconjugated
Storage:	Store at -20°C as received.
Stability:	Stable for 12 months from date of receipt.
Predicted Protein Size:	37187 Da
Gene Name:	protein phosphatase 1 catalytic subunit beta
Database Link:	NP_002700 Entrez Gene 19046 Mouse Entrez Gene 25594 Rat Entrez Gene 5500 Human P62140
Synonyms:	HEL-S-80p; PP-1B; PP1B; PP1beta; PPP1CD
Protein Families:	Druggable Genome, Phosphatase
Protein Pathways:	Focal adhesion, Insulin signaling pathway, Long-term potentiation, Oocyte meiosis, Regulation of actin cytoskeleton, Vascular smooth muscle contraction

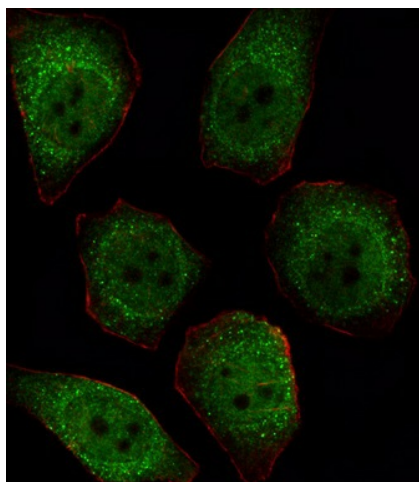


[View online »](#)

Product images:



Western blot analysis of PPP1CB (arrow) using rabbit polyclonal PPP1CB Antibody (K301) (Cat. #TA325036). 293 cell lysates (2 ug/lane) either nontransfected (Lane 1) or transiently transfected (Lane 2) with the PPP1CB gene.



IF image of U251 cell stained with PPP1CB Antibody (C-term) (Cat#TA325036). U251 cells were incubated with PPP1CB primary antibody (1:25, 1 h at 37°C). For secondary antibody, Alexa Fluor® 488 conjugated donkey anti-rabbit antibody (green) was used (1:400). Cytoplasmic actin was counterstained with Alexa Fluor® 555 (red) conjugated Phalloidin (7 units/ml). PPP1CB immunoreactivity is localized to Cytoplasm and Nucleus significantly.