

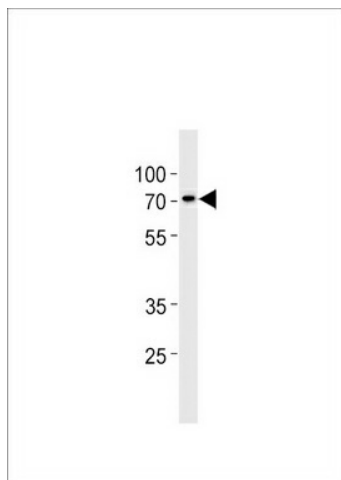
Product datasheet for **TA325035S**

ST7L Rabbit Polyclonal Antibody

Product data:

Product Type:	Primary Antibodies
Applications:	WB
Recommended Dilution:	WB: 1:1000
Reactivity:	Human
Host:	Rabbit
Isotype:	IgG
Clonality:	Polyclonal
Immunogen:	This ST7L antibody is generated from rabbits immunized with a KLH conjugated synthetic peptide between 542-569 amino acids from the C-terminal region of human ST7L.
Formulation:	Purified polyclonal antibody supplied in PBS with 0.09% (W/V) sodium azide.
Concentration:	lot specific
Purification:	This antibody is purified through a protein A column, followed by peptide affinity purification.
Conjugation:	Unconjugated
Storage:	Store at -20°C as received.
Stability:	Stable for 12 months from date of receipt.
Predicted Protein Size:	64779 Da
Gene Name:	suppression of tumorigenicity 7 like
Database Link:	NP_060214 Entrez Gene 54879 Human Q8TDW4
Synonyms:	FAM4B; ST7R; STLR
Protein Families:	Transmembrane


[View online »](#)

Product images:

ST7L Antibody (C-term) (Cat. #TA325035S)
western blot analysis in A375 cell line lysates
(35ug/lane). This demonstrates the ST7L antibody
detected the ST7L protein (arrow).