

Product datasheet for **TA325034S**

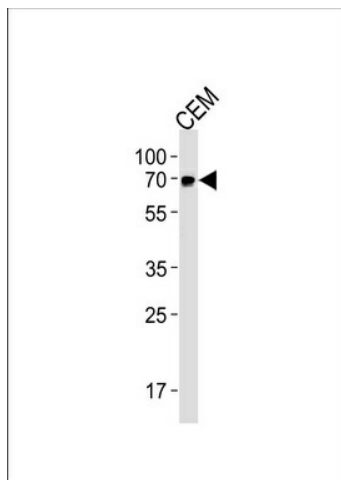
GBP2 Rabbit Polyclonal Antibody

Product data:

| | |
|-------------------------|---|
| Product Type: | Primary Antibodies |
| Applications: | WB |
| Recommended Dilution: | WB: 1:1000 |
| Reactivity: | Human |
| Host: | Rabbit |
| Isotype: | IgG |
| Clonality: | Polyclonal |
| Immunogen: | This GBP2 antibody is generated from rabbits immunized with a KLH conjugated synthetic peptide between 192-220 amino acids from the Central region of human GBP2. |
| Formulation: | Purified polyclonal antibody supplied in PBS with 0.09% (W/V) sodium azide. |
| Concentration: | lot specific |
| Purification: | This antibody is purified through a protein A column, followed by peptide affinity purification. |
| Conjugation: | Unconjugated |
| Storage: | Store at -20°C as received. |
| Stability: | Stable for 12 months from date of receipt. |
| Predicted Protein Size: | 67209 Da |
| Gene Name: | guanylate binding protein 2 |
| Database Link: | NP_004111 Entrez Gene 2634 Human P32456 |
| Synonyms: | DKFZp451C2311 |



[View online »](#)

Product images:

GBP2 Antibody (Center) (Cat. #TA325034])
western blot analysis in CEM cell line lysates
(35ug/lane). This demonstrates the GBP2 antibody
detected the GBP2 protein (arrow).