

Product datasheet for **TA325034**

GBP2 Rabbit Polyclonal Antibody

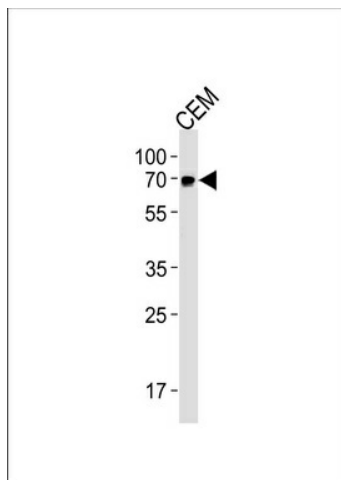
Product data:

Product Type:	Primary Antibodies
Applications:	WB
Recommended Dilution:	WB: 1:1000
Reactivity:	Human
Host:	Rabbit
Isotype:	IgG
Clonality:	Polyclonal
Immunogen:	This GBP2 antibody is generated from rabbits immunized with a KLH conjugated synthetic peptide between 192-220 amino acids from the Central region of human GBP2.
Formulation:	Purified polyclonal antibody supplied in PBS with 0.09% (W/V) sodium azide.
Concentration:	lot specific
Purification:	This antibody is purified through a protein A column, followed by peptide affinity purification.
Conjugation:	Unconjugated
Storage:	Store at -20°C as received.
Stability:	Stable for 12 months from date of receipt.
Predicted Protein Size:	67209 Da
Gene Name:	guanylate binding protein 2
Database Link:	NP_004111 Entrez Gene 2634 Human P32456
Synonyms:	DKFZp451C2311



[View online »](#)

Product images:



GBP2 Antibody (Center) (Cat. #TA325034)
western blot analysis in CEM cell line lysates
(35ug/lane). This demonstrates the GBP2 antibody
detected the GBP2 protein (arrow).