

Product datasheet for **TA325032S**

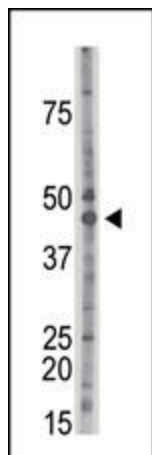
CKII alpha (CSNK2A1) Rabbit Polyclonal Antibody

Product data:

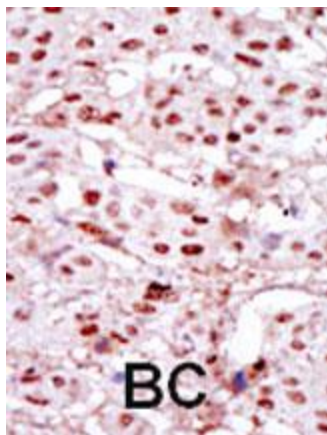
Product Type:	Primary Antibodies
Applications:	IHC, WB
Recommended Dilution:	WB: 1:1000, IHC: 1:50~100
Reactivity:	Human, Mouse (Predicted: Rat, Bovine, Chicken, Rabbit, Xenopus)
Host:	Rabbit
Isotype:	IgG
Clonality:	Polyclonal
Immunogen:	This CKII alpha (CSNK2A1) antibody is generated from rabbits immunized with a KLH conjugated synthetic peptide between 240-269 amino acids from the Central region of human CKII alpha (CSNK2A1).
Formulation:	Purified polyclonal antibody supplied in PBS with 0.09% (W/V) sodium azide.
Concentration:	lot specific
Purification:	This antibody is prepared by Saturated Ammonium Sulfate (SAS) precipitation followed by dialysis against PBS.
Conjugation:	Unconjugated
Storage:	Store at -20°C as received.
Stability:	Stable for 12 months from date of receipt.
Predicted Protein Size:	45144 Da
Gene Name:	casein kinase 2 alpha 1
Database Link:	NP_001886 Entrez Gene 12995 Mouse Entrez Gene 116549 Rat Entrez Gene 1457 Human P68400
Synonyms:	CK2A1; CKII; CSNK2A3
Protein Families:	Druggable Genome, ES Cell Differentiation/IPS, Protein Kinase
Protein Pathways:	Adherens junction, Tight junction, Wnt signaling pathway



[View online »](#)

Product images:

The anti-CSNK2A1 Pab (Cat. #[TA325032]) is used in Western blot to detect CSNK2A1 in mouse brain tissue lysate.



Formalin-fixed and paraffin-embedded human cancer tissue reacted with the primary antibody, which was peroxidase-conjugated to the secondary antibody, followed by DAB staining. This data demonstrates the use of this antibody for immunohistochemistry; clinical relevance has not been evaluated. BC = breast carcinoma