

## Product datasheet for **TA325031**

### NDUFS7 Rabbit Polyclonal Antibody

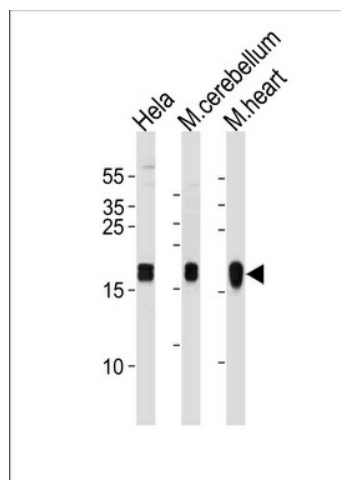
#### Product data:

Product Type:	Primary Antibodies
Applications:	WB
Recommended Dilution:	WB: 1:1000
Reactivity:	Human, Mouse (Predicted: Bovine)
Host:	Rabbit
Isotype:	IgG
Clonality:	Polyclonal
Immunogen:	This NDUFS7 antibody is generated from rabbits immunized with a KLH conjugated synthetic peptide between 119-146 amino acids from the Central region of human NDUFS7.
Formulation:	Purified polyclonal antibody supplied in PBS with 0.09% (W/V) sodium azide.
Concentration:	lot specific
Purification:	This antibody is purified through a protein A column, followed by peptide affinity purification.
Conjugation:	Unconjugated
Storage:	Store at -20°C as received.
Stability:	Stable for 12 months from date of receipt.
Predicted Protein Size:	23564 Da
Gene Name:	NADH:ubiquinone oxidoreductase core subunit S7
Database Link:	<a href="#">NP_077718</a> <a href="#">Entrez Gene 75406 Mouse</a> <a href="#">Entrez Gene 374291 Human</a> <a href="#">O75251</a>
Synonyms:	CI-20; CI-20KD; MY017; PSST
Protein Pathways:	Alzheimer's disease, Huntington's disease, Metabolic pathways, Oxidative phosphorylation, Parkinson's disease



[View online »](#)

## Product images:



NDUFS7 Antibody (Center) (Cat. #TA325031) western blot analysis in HeLa cell line and mouse cerebellum, heart tissue lysates (35ug/lane). This demonstrates the NDUFS7 antibody detected the NDUFS7 protein (arrow).