

Product datasheet for TA325028S

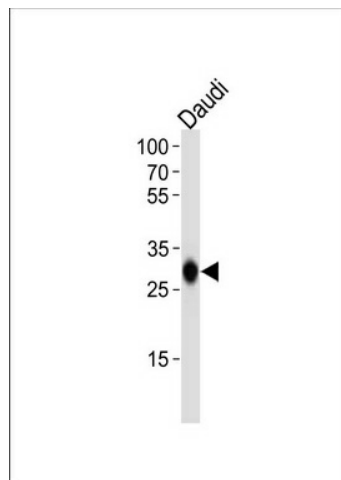
HLA-DQB1 Rabbit Polyclonal Antibody

Product data:

Product Type:	Primary Antibodies
Applications:	WB
Recommended Dilution:	WB: 1:1000
Reactivity:	Human
Host:	Rabbit
Isotype:	IgG
Clonality:	Polyclonal
Immunogen:	This HLA-DQB1 antibody is generated from rabbits immunized with a KLH conjugated synthetic peptide between 13-39 amino acids from the N-terminal region of human HLA-DQB1.
Formulation:	Purified polyclonal antibody supplied in PBS with 0.09% (W/V) sodium azide.
Concentration:	lot specific
Purification:	This antibody is purified through a protein A column, followed by peptide affinity purification.
Conjugation:	Unconjugated
Storage:	Store at -20°C as received.
Stability:	Stable for 12 months from date of receipt.
Predicted Protein Size:	29991 Da
Gene Name:	major histocompatibility complex, class II, DQ beta 1
Database Link:	NP_002114 Entrez Gene 3119 Human P01920
Synonyms:	CELIAC1; HLA-DQB; IDDM1
Protein Families:	Transmembrane
Protein Pathways:	Allograft rejection, Antigen processing and presentation, Asthma, Autoimmune thyroid disease, Cell adhesion molecules (CAMs), Graft-versus-host disease, Systemic lupus erythematosus, Type I diabetes mellitus, Viral myocarditis


[View online »](#)

Product images:



HLA-DQB1 Antibody (N-term) (Cat. #TA325028])
western blot analysis in Daudi cell line lysates
(35ug/lane). This demonstrates the HLA-DQB1
antibody detected the HLA-DQB1 protein (arrow).