

Product datasheet for **TA325027S**

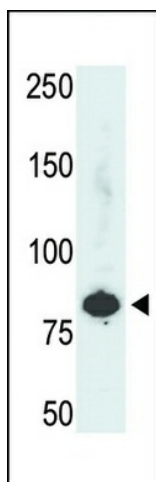
PFKL Rabbit Polyclonal Antibody

Product data:

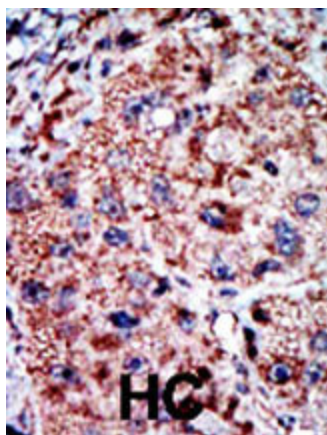
Product Type:	Primary Antibodies
Applications:	IHC, WB
Recommended Dilution:	WB: 1:1000, IHC: 1:50~100
Reactivity:	Human, Mouse
Host:	Rabbit
Isotype:	IgG
Clonality:	Polyclonal
Immunogen:	This PFKL antibody is generated from rabbits immunized with a KLH conjugated synthetic peptide between 669-699 amino acids from the C-terminal region of human PFKL.
Formulation:	Purified polyclonal antibody supplied in PBS with 0.09% (W/V) sodium azide.
Concentration:	lot specific
Purification:	This antibody is prepared by Saturated Ammonium Sulfate (SAS) precipitation followed by dialysis against PBS.
Conjugation:	Unconjugated
Storage:	Store at -20°C as received.
Stability:	Stable for 12 months from date of receipt.
Predicted Protein Size:	85018 Da
Gene Name:	phosphofructokinase, liver type
Database Link:	NP_002617 Entrez Gene 18641 Mouse Entrez Gene 5211 Human P17858
Synonyms:	ATP-PFK; PFK-B; PFK-L
Protein Families:	Druggable Genome
Protein Pathways:	Fructose and mannose metabolism, Galactose metabolism, Glycolysis / Gluconeogenesis, Metabolic pathways, Pentose phosphate pathway



[View online »](#)

Product images:

The anti-PFKL Pab (Cat. #[TA325027]) is used in Western blot to detect PFKL in HepG2 cell lysate.



Formalin-fixed and paraffin-embedded human cancer tissue reacted with the primary antibody, which was peroxidase-conjugated to the secondary antibody, followed by AEC staining. This data demonstrates the use of this antibody for immunohistochemistry; clinical relevance has not been evaluated. BC = breast carcinoma; HC = hepatocarcinoma.