

Product datasheet for **TA325026S**

GSK3 alpha (GSK3A) Rabbit Polyclonal Antibody

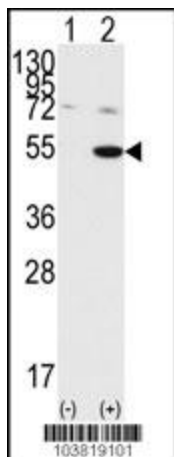
Product data:

Product Type:	Primary Antibodies
Applications:	WB
Recommended Dilution:	WB: 1:1000
Reactivity:	Human
Host:	Rabbit
Isotype:	IgG
Clonality:	Polyclonal
Immunogen:	This GSK3 alpha (GSK3A) antibody is generated from rabbits immunized with a KLH conjugated synthetic peptide between 448-478 amino acids from the C-terminal region of human GSK3 alpha (GSK3A).
Formulation:	Purified polyclonal antibody supplied in PBS with 0.09% (W/V) sodium azide.
Concentration:	lot specific
Purification:	This antibody is purified through a protein A column, followed by peptide affinity purification.
Conjugation:	Unconjugated
Storage:	Store at -20°C as received.
Stability:	Stable for 12 months from date of receipt.
Predicted Protein Size:	50981 Da
Gene Name:	glycogen synthase kinase 3 alpha
Database Link:	NP_063937 Entrez Gene 2931 Human P49840
Synonyms:	DKFZp686D0638
Protein Families:	Druggable Genome, Protein Kinase
Protein Pathways:	Chemokine signaling pathway

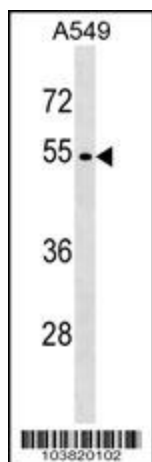


[View online »](#)

Product images:



Western blot analysis of GSK3A (arrow) using GSK3A Antibody (C-term) (Cat.#[TA325026]). 293 cell lysates (2 ug/lane) either nontransfected (Lane 1) or transiently transfected with the GSK3A gene (Lane 2) (Origene Technologies).



GSK3A Antibody (C-term) (Cat. #[TA325026]) western blot analysis in A549 cell line lysates (35ug/lane). This demonstrates the GSK3A antibody detected the GSK3A protein (arrow).