

## Product datasheet for **TA325025**

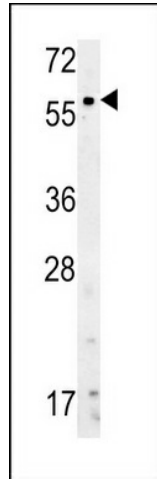
### Natriuretic Peptide Receptor C (NPR3) Rabbit Polyclonal Antibody

#### Product data:

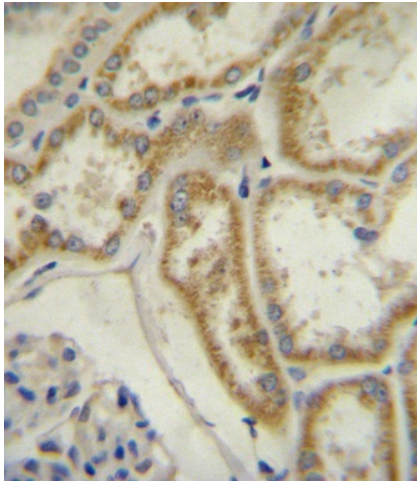
Product Type:	Primary Antibodies
Applications:	IF, IHC, WB
Recommended Dilution:	IF: 1:200, WB: 1:1000, IHC: 1:10~50
Reactivity:	Human
Host:	Rabbit
Isotype:	IgG
Clonality:	Polyclonal
Immunogen:	This Natriuretic Peptide Receptor C antibody is generated from rabbits immunized with a KLH conjugated synthetic peptide between 67-97 amino acids from the N-terminal region of human Natriuretic Peptide Receptor C.
Formulation:	Purified polyclonal antibody supplied in PBS with 0.09% (W/V) sodium azide.
Concentration:	lot specific
Purification:	This antibody is prepared by Saturated Ammonium Sulfate (SAS) precipitation followed by dialysis against PBS.
Conjugation:	Unconjugated
Storage:	Store at -20°C as received.
Stability:	Stable for 12 months from date of receipt.
Predicted Protein Size:	59808 Da
Gene Name:	natriuretic peptide receptor 3
Database Link:	<a href="#">NP_000899</a> <a href="#">Entrez Gene 4883 Human P17342</a>
Synonyms:	ANP-C; ANPR-C; ANPRC; C5orf23; GUCY2B; NPR-C; NPRC
Protein Families:	Druggable Genome, Transmembrane



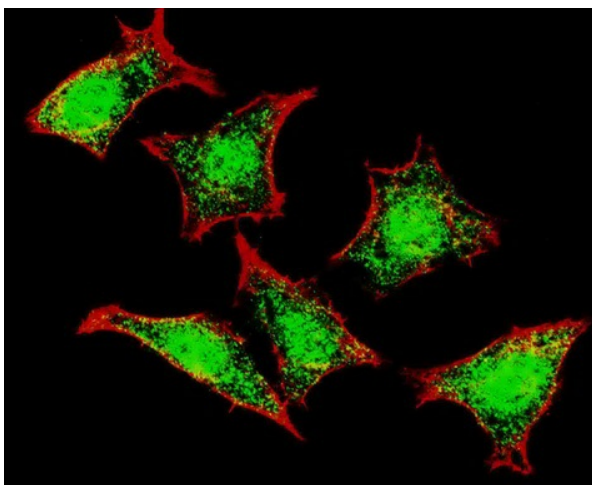
[View online »](#)

**Product images:**

Western blot analysis of ANPC-S82 (Cat. #TA325025) in NCI-H460, HL-60 cell line lysates (35ug/lane). ANPC (arrow) was detected using the purified Pab.



Natriuretic Peptide Receptor C (NPR3/ANPC) Antibody (N-term) (Cat. #TA325025) immunohistochemistry analysis in formalin fixed and paraffin embedded human kidney tissue followed by peroxidase conjugation of the secondary antibody and DAB staining. This data demonstrates the use of Natriuretic Peptide Receptor C (NPR3/ANPC) Antibody (N-term) for immunohistochemistry. Clinical relevance has not been evaluated.



IF image of HeLa cells stained with Natriuretic Peptide Receptor C (N-term) antibody. HeLa cells were incubated with TA325025 Natriuretic Peptide Receptor C (N-term) primary antibody (1:200, 2 h at RT). For secondary antibody, Alexa Fluor® 488 conjugated donkey anti-rabbit antibody (green) was used (1:1000, 1h). Nuclei were counterstained with Hoechst 33342 (blue). Note the highly specific localization of the Natriuretic Peptide Receptor C mainly to the nucleus.