

Product datasheet for **TA325023S**

Cebpd Rabbit Polyclonal Antibody

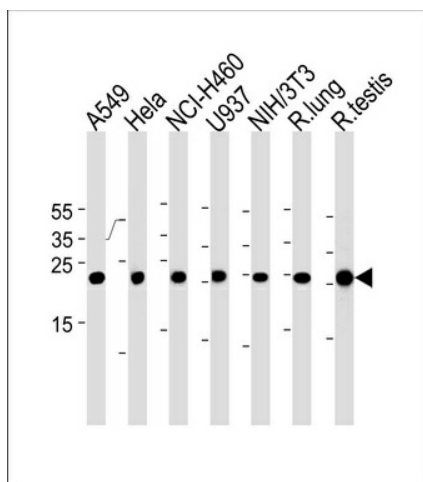
Product data:

Product Type:	Primary Antibodies
Applications:	WB
Recommended Dilution:	WB: 1:1000
Reactivity:	Human, Mouse, Rat
Host:	Rabbit
Isotype:	IgG
Clonality:	Polyclonal
Immunogen:	This Rat Cebpd antibody is generated from rabbits immunized with a KLH conjugated synthetic peptide between 161-189 amino acids from the Central region of rat Cebpd.
Formulation:	Purified polyclonal antibody supplied in PBS with 0.09% (W/V) sodium azide.
Concentration:	lot specific
Purification:	This antibody is purified through a protein A column, followed by peptide affinity purification.
Conjugation:	Unconjugated
Storage:	Store at -20°C as received.
Stability:	Stable for 12 months from date of receipt.
Predicted Protein Size:	28600 Da
Gene Name:	CCAAT/enhancer binding protein delta
Database Link:	NP_037286 Entrez Gene 1052 HumanEntrez Gene 12609 MouseEntrez Gene 25695 Rat Q03484
Synonyms:	C/EBP-delta; CELF; CRP3; NF-IL6-beta



[View online »](#)

Product images:



Rat Cebpd Antibody (Center) (Cat. #[TA325023]) western blot analysis in A549, HeLa, NCI-H460, U-937, mouse NIH/3T3 cell line and rat lung, testis tissue lysates (35ug/lane). This demonstrates the Rat Cebpd antibody detected the Rat Cebpd protein (arrow).