

## Product datasheet for **TA325022S**

### PACSIN2 Rabbit Polyclonal Antibody

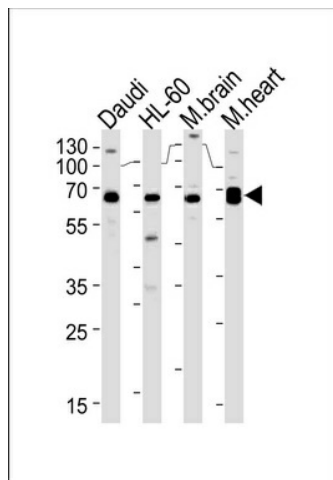
#### Product data:

Product Type:	Primary Antibodies
Applications:	IF, IHC, WB
Recommended Dilution:	IF: 1:100, WB: 1:1000, IHC: 1:50~100
Reactivity:	Human, Mouse
Host:	Rabbit
Isotype:	IgG
Clonality:	Polyclonal
Immunogen:	This PACSIN2 antibody is generated from rabbits immunized with a KLH conjugated synthetic peptide between 342-371 amino acids from the C-terminal region of human PACSIN2.
Formulation:	Purified polyclonal antibody supplied in PBS with 0.09% (W/V) sodium azide.
Concentration:	lot specific
Purification:	This antibody is prepared by Saturated Ammonium Sulfate (SAS) precipitation followed by dialysis against PBS.
Conjugation:	Unconjugated
Storage:	Store at -20°C as received.
Stability:	Stable for 12 months from date of receipt.
Predicted Protein Size:	55739 Da
Gene Name:	protein kinase C and casein kinase substrate in neurons 2
Database Link:	<a href="#">NP_009160</a> <a href="#">Entrez Gene 23970 Mouse</a> <a href="#">Entrez Gene 11252 Human</a> <a href="#">Q9UNF0</a>
Synonyms:	SDPII

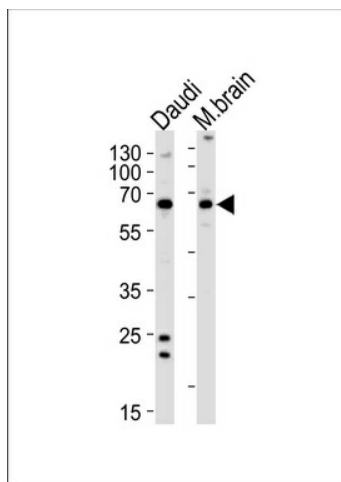


[View online »](#)

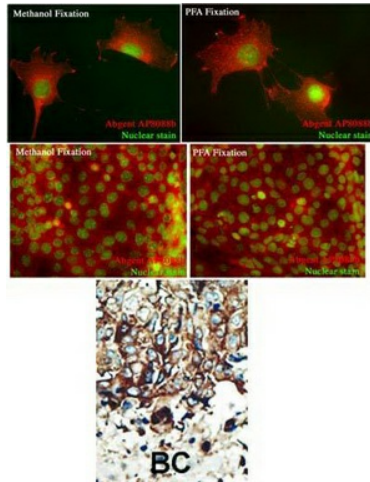
## Product images:



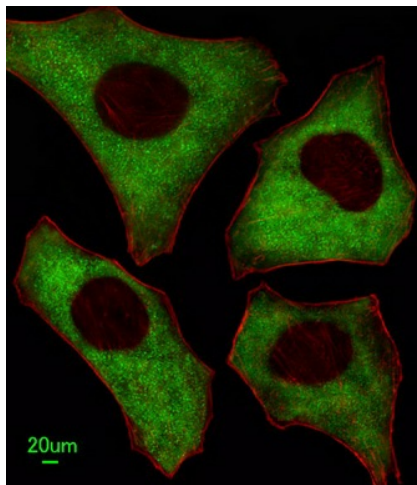
PACSIN2 Antibody (S357) (Cat.# [TA325022]) western blot analysis in Daudi, HL-60 cell line and mouse brain, rat heart lysates (35ug/lane). This demonstrates the PACSIN2 antibody detected the PACSIN2 protein (arrow).



PACSIN2 Antibody (S357) (Cat.# [TA325022]) western blot analysis in Daudi cell line and mouse brain lysates (35ug/lane). This demonstrates the PACSIN2 antibody detected the PACSIN2 protein (arrow).



Formalin-fixed and paraffin-embedded human cancer tissue reacted with the primary antibody, which was peroxidase-conjugated to the secondary antibody, followed by DAB staining. This data demonstrates the use of this antibody for immunohistochemistry; clinical relevance has not been evaluated. BC = breast carcinoma; HC = hepatocarcinoma.



Immunofluorescent analysis of HeLa cells, using PACSIN2 Antibody (C-term) (Cat. #[TA325022]). [TA325022] was diluted at 1:100 dilution. Alexa Fluor® 488-conjugated goat anti-rabbit IgG at 1:400 dilution was used as the secondary antibody (green). Cytoplasmic actin was counterstained with Dylight Fluor® 554 (red) conjugated Phalloidin (red).