

## Product datasheet for **TA325021S**

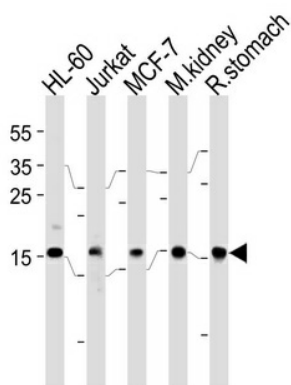
### NME2 Rabbit Polyclonal Antibody

#### Product data:

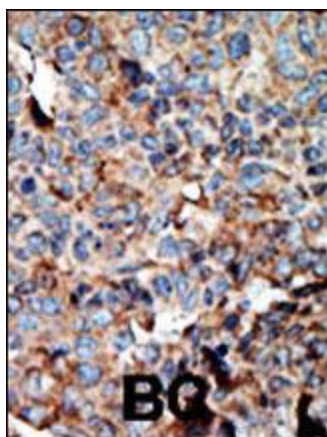
Product Type:	Primary Antibodies
Applications:	IF, IHC, WB
Recommended Dilution:	WB: 1:1000, IHC: 1:50~100, IF: 1:10~50
Reactivity:	Human, Mouse, Rat
Host:	Rabbit
Isotype:	IgG
Clonality:	Polyclonal
Immunogen:	This NME2 antibody is generated from rabbits immunized with a KLH conjugated synthetic peptide between 25-54 amino acids from the N-terminal region of human NME2.
Formulation:	Purified polyclonal antibody supplied in PBS with 0.09% (W/V) sodium azide.
Concentration:	lot specific
Purification:	This antibody is purified through a protein A column, followed by peptide affinity purification.
Conjugation:	Unconjugated
Storage:	Store at -20°C as received.
Stability:	Stable for 12 months from date of receipt.
Predicted Protein Size:	17298 Da
Gene Name:	NME/NM23 nucleoside diphosphate kinase 2
Database Link:	<a href="#">NP_002503</a> <a href="#">Entrez Gene 18103 Mouse</a> <a href="#">Entrez Gene 83782 Rat</a> <a href="#">Entrez Gene 4831 Human</a> <a href="#">P22392</a>
Synonyms:	NDKB; NDPK-B; NDPKB; NM23-H2; NM23B; PUF
Protein Families:	Druggable Genome, Transcription Factors
Protein Pathways:	Metabolic pathways, Purine metabolism, Pyrimidine metabolism


[View online »](#)

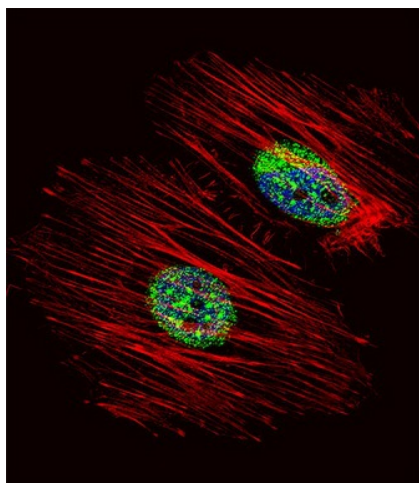
## Product images:



NME2 Antibody (F40) (Cat. #TA325021J) western blot analysis in HL-60, Jurkat, MCF-7 cell line, mouse kidney and rat stomach tissue lysates (35ug/lane). This demonstrates the NME2 antibody detected the NME2 protein (arrow).



Formalin-fixed and paraffin-embedded human cancer tissue reacted with the primary antibody, which was peroxidase-conjugated to the secondary antibody, followed by AEC staining. This data demonstrates the use of this antibody for immunohistochemistry; clinical relevance has not been evaluated. BC = breast carcinoma; HC = hepatocarcinoma.



IF image of HeLa cell stained with NME2 Antibody (N-term) (Cat#[TA325021]). HeLa cells were incubated with NME2 primary antibody (1:25, 1 h at 37°C). For secondary antibody, Alexa Fluor® 488 conjugated donkey anti-rabbit antibody (green) was used (1:400). Cytoplasmic actin was counterstained with Alexa Fluor® 555 (red) conjugated Phalloidin (7 units/ml). Nuclei were counterstained with DAPI (blue). NME2 immunoreactivity is localized to Cytoplasm and Nucleus significantly.