

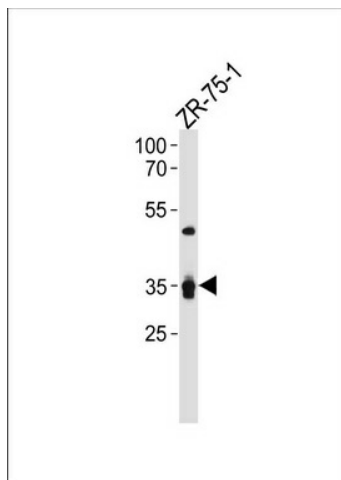
Product datasheet for **TA325019S**

IL3RA Rabbit Polyclonal Antibody

Product data:

Product Type:	Primary Antibodies
Applications:	WB
Recommended Dilution:	WB: 1:1000
Reactivity:	Human
Host:	Rabbit
Isotype:	IgG
Clonality:	Polyclonal
Immunogen:	This IL3RA antibody is generated from rabbits immunized with a KLH conjugated synthetic peptide between 322-348 amino acids from the C-terminal region of human IL3RA.
Formulation:	Purified polyclonal antibody supplied in PBS with 0.09% (W/V) sodium azide.
Concentration:	lot specific
Purification:	This antibody is purified through a protein A column, followed by peptide affinity purification.
Conjugation:	Unconjugated
Storage:	Store at -20°C as received.
Stability:	Stable for 12 months from date of receipt.
Predicted Protein Size:	43330 Da
Gene Name:	interleukin 3 receptor subunit alpha
Database Link:	NP_002174 Entrez Gene 3563 Human P26951
Synonyms:	CD123; hIL-3Ra; IL3R; IL3RAY; IL3RX; IL3RY
Protein Families:	Transmembrane
Protein Pathways:	Apoptosis, Cytokine-cytokine receptor interaction, Hematopoietic cell lineage, Jak-STAT signaling pathway


[View online »](#)

Product images:

IL3RA Antibody (C-term) (Cat. #[TA325019])
western blot analysis in ZR-75-1 cell line lysates
(35ug/lane). This demonstrates the IL3RA
antibody detected the IL3RA protein (arrow).