

## Product datasheet for **TA325017S**

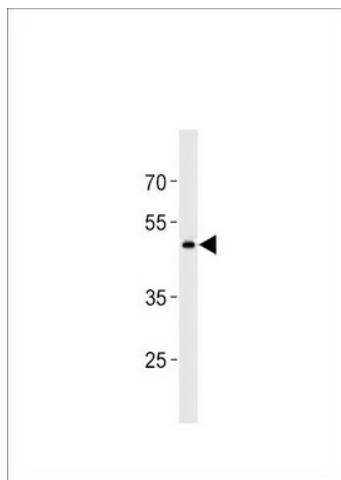
### GPR 150 (GPR150) Rabbit Polyclonal Antibody

#### Product data:

Product Type:	Primary Antibodies
Applications:	WB
Recommended Dilution:	WB: 1:1000
Reactivity:	Human
Host:	Rabbit
Isotype:	IgG
Clonality:	Polyclonal
Immunogen:	This GPR150 antibody is generated from rabbits immunized with a KLH conjugated synthetic peptide between 366-395 amino acids from the C-terminal region of human GPR150.
Formulation:	Purified polyclonal antibody supplied in PBS with 0.09% (W/V) sodium azide.
Concentration:	lot specific
Purification:	This antibody is purified through a protein A column, followed by peptide affinity purification.
Conjugation:	Unconjugated
Storage:	Store at -20°C as received.
Stability:	Stable for 12 months from date of receipt.
Predicted Protein Size:	46353 Da
Gene Name:	G protein-coupled receptor 150
Database Link:	<a href="#">NP_954713</a> <a href="#">Entrez Gene 285601 Human</a> <a href="#">Q8NGU9</a>
Synonyms:	PGR11
Protein Families:	Druggable Genome, Transmembrane



[View online »](#)

**Product images:**

GPR150 Antibody (C-term) (Cat. #TA325017])  
western blot analysis in K562 cell line lysates  
(35ug/lane). This demonstrates the GPR150  
antibody detected the GPR150 protein (arrow).