

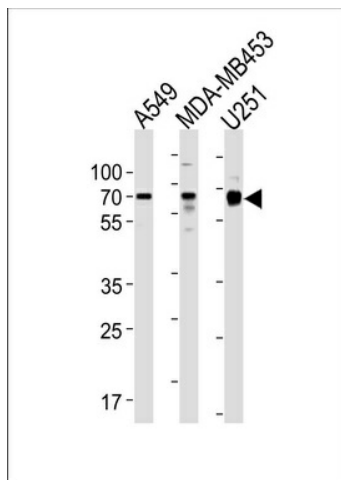
Product datasheet for **TA325016S**

GRB10 Rabbit Polyclonal Antibody

Product data:

Product Type:	Primary Antibodies
Applications:	WB
Recommended Dilution:	WB: 1:1000
Reactivity:	Human
Host:	Rabbit
Isotype:	IgG
Clonality:	Polyclonal
Immunogen:	This GRB10 antibody is generated from rabbits immunized with a KLH conjugated synthetic peptide between 1-30 amino acids from the N-terminal region of human GRB10.
Formulation:	Purified polyclonal antibody supplied in PBS with 0.09% (W/V) sodium azide.
Concentration:	lot specific
Purification:	This antibody is purified through a protein A column, followed by peptide affinity purification.
Conjugation:	Unconjugated
Storage:	Store at -20°C as received.
Stability:	Stable for 12 months from date of receipt.
Predicted Protein Size:	67231 Da
Gene Name:	growth factor receptor bound protein 10
Database Link:	NP_005302 Entrez Gene 2887 Human Q13322
Synonyms:	Grb-10; GRB-IR; IRBP; MEG1; RSS
Protein Families:	Druggable Genome

[View online »](#)

Product images:

GRB10 Antibody (N-term) (Cat. #TA325016])
western blot analysis in A549, MDA-MB453, U251
cell line lysates (35ug/lane). This demonstrates the
GRB10 antibody detected the GRB10 protein
(arrow).