

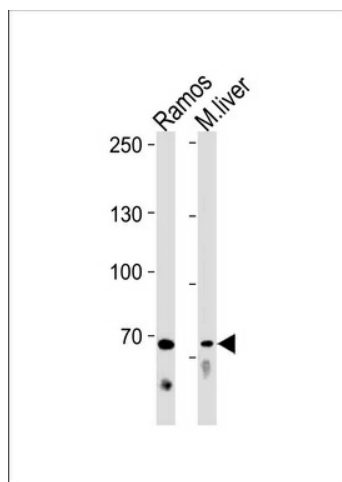
Product datasheet for TA325013S

TRIF (TICAM1) Rabbit Polyclonal Antibody

Product data:

Product Type:	Primary Antibodies
Applications:	WB
Recommended Dilution:	WB: 1:1000
Reactivity:	Human, Mouse
Host:	Rabbit
Isotype:	IgG
Clonality:	Polyclonal
Immunogen:	This TICAM1 antibody is generated from rabbits immunized with a KLH conjugated synthetic peptide between 115-143 amino acids from the N-terminal region of human TICAM1.
Formulation:	Purified polyclonal antibody supplied in PBS with 0.09% (W/V) sodium azide.
Concentration:	lot specific
Purification:	This antibody is purified through a protein A column, followed by peptide affinity purification.
Conjugation:	Unconjugated
Storage:	Store at -20°C as received.
Stability:	Stable for 12 months from date of receipt.
Predicted Protein Size:	76422 Da
Gene Name:	toll like receptor adaptor molecule 1
Database Link:	NP_891549 Entrez Gene 106759 Mouse Entrez Gene 148022 Human Q8IUC6
Synonyms:	IIAE6; MyD88-3; PRVTIRB; TICAM-1; TRIF
Protein Families:	Druggable Genome
Protein Pathways:	Toll-like receptor signaling pathway


[View online »](#)

Product images:


TICAM1 Antibody (N-term) (Cat. #[TA325013])
western blot analysis in Ramos cell line and
mouse liver tissue lysates (35ug/lane).This
demonstrates the TICAM1 antibody detected the
TICAM1 protein (arrow).