

Product datasheet for **TA325012S**

Caspase 9 (CASP9) Rabbit Polyclonal Antibody

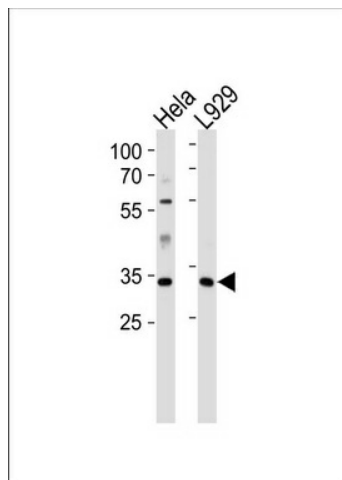
Product data:

Product Type:	Primary Antibodies
Applications:	IF, IHC, WB
Recommended Dilution:	WB: 1:1000, IHC: 1:10~50, IF: 1:10~50
Reactivity:	Human, Mouse
Host:	Rabbit
Isotype:	IgG
Clonality:	Polyclonal
Immunogen:	This CASP9 antibody is generated from rabbits immunized with a KLH conjugated synthetic peptide between 183-211 amino acids from the Central region of human CASP9.
Formulation:	Purified polyclonal antibody supplied in PBS with 0.09% (W/V) sodium azide.
Concentration:	lot specific
Purification:	This antibody is prepared by Saturated Ammonium Sulfate (SAS) precipitation followed by dialysis against PBS.
Conjugation:	Unconjugated
Storage:	Store at -20°C as received.
Stability:	Stable for 12 months from date of receipt.
Predicted Protein Size:	46281 Da
Gene Name:	caspase 9
Database Link:	NP_001220 Entrez Gene 12371 Mouse Entrez Gene 842 Human P55211
Synonyms:	APAF-3; APAF3; ICE-LAP6; MCH6; PPP1R56
Protein Families:	Druggable Genome, Protease, Stem cell - Pluripotency
Protein Pathways:	Alzheimer's disease, Amyotrophic lateral sclerosis (ALS), Apoptosis, Colorectal cancer, Endometrial cancer, Huntington's disease, Non-small cell lung cancer, p53 signaling pathway, Pancreatic cancer, Parkinson's disease, Pathways in cancer, Prostate cancer, Small cell lung cancer, VEGF signaling pathway, Viral myocarditis

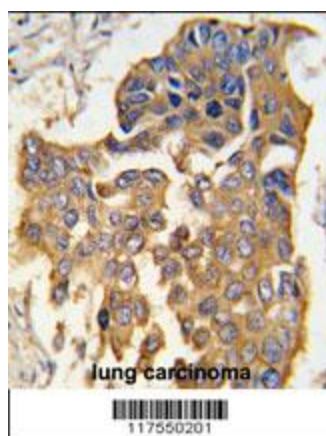


[View online »](#)

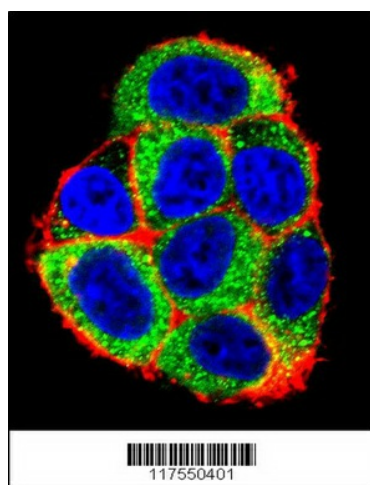
Product images:



CASP9 Antibody (Center) (Cat. #[TA325012]) western blot analysis in HeLa cell line and mouse L929 tissue lysates (35ug/lane). This demonstrates the CASP9 antibody detected the CASP9 protein (arrow).



Formalin-fixed and paraffin-embedded human lung carcinoma tissue reacted with CASP9 antibody (Center) (Cat. #[TA325012]), which was peroxidase-conjugated to the secondary antibody, followed by DAB staining. This data demonstrates the use of this antibody for immunohistochemistry; clinical relevance has not been evaluated.



Confocal immunofluorescent analysis of CASP9 Antibody (Center) (Cat#[TA325012]) with HeLa cell followed by Alexa Fluor 488-conjugated goat anti-rabbit IgG (green). Actin filaments have been labeled with Alexa Fluor 555 phalloidin (red). DAPI was used to stain the cell nuclear (blue).