

## Product datasheet for **TA325011**

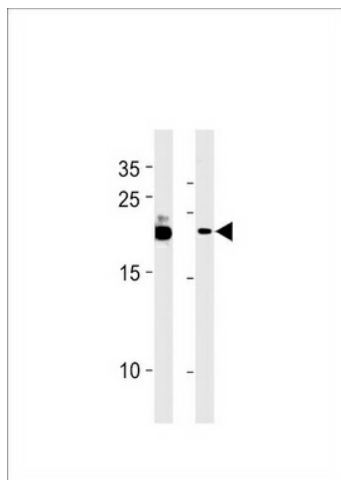
### **C13orf30 (FAM216B) Rabbit Polyclonal Antibody**

#### **Product data:**

Product Type:	Primary Antibodies
Applications:	WB
Recommended Dilution:	WB: 1:1000
Reactivity:	Human
Host:	Rabbit
Isotype:	IgG
Clonality:	Polyclonal
Immunogen:	This C13orf30 antibody is generated from rabbits immunized with a KLH conjugated synthetic peptide between 111-139 amino acids from the C-terminal region of human C13orf30.
Formulation:	Purified polyclonal antibody supplied in PBS with 0.09% (W/V) sodium azide.
Concentration:	lot specific
Purification:	This antibody is purified through a protein A column, followed by peptide affinity purification.
Conjugation:	Unconjugated
Storage:	Store at -20°C as received.
Stability:	Stable for 12 months from date of receipt.
Predicted Protein Size:	16362 Da
Gene Name:	family with sequence similarity 216 member B
Database Link:	<a href="#">NP_872314</a> <a href="#">Entrez Gene 144809 Human</a> <a href="#">Q8N7L0</a>
Synonyms:	C13orf30

[View online »](#)

## Product images:



C13orf30 Antibody (C-term) (Cat. #TA325011)  
western blot analysis in B-3, MCF-7 cell line  
lysates (35ug/lane). This demonstrates the  
C13orf30 antibody detected the C13orf30 protein  
(arrow).