

Product datasheet for **TA325009S**

MEK2 (MAP2K2) Rabbit Polyclonal Antibody

Product data:

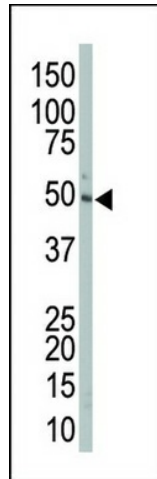
| | |
|-------------------------|---|
| Product Type: | Primary Antibodies |
| Applications: | IF, IHC, WB |
| Recommended Dilution: | IF: 1:10~50, WB: 1:1000, IHC: 1:50~100 |
| Reactivity: | Human, Mouse |
| Host: | Rabbit |
| Isotype: | IgG |
| Clonality: | Polyclonal |
| Immunogen: | This MEK2 (MAP2K2) antibody is generated from rabbits immunized with a KLH conjugated synthetic peptide between 262-292 amino acids from the Central region of human MEK2 (MAP2K2). |
| Formulation: | Purified polyclonal antibody supplied in PBS with 0.09% (W/V) sodium azide. |
| Concentration: | lot specific |
| Purification: | This antibody is purified through a protein A column, followed by peptide affinity purification. |
| Conjugation: | Unconjugated |
| Storage: | Store at -20°C as received. |
| Stability: | Stable for 12 months from date of receipt. |
| Predicted Protein Size: | 44424 Da |
| Gene Name: | mitogen-activated protein kinase kinase 2 |
| Database Link: | NP_109587 Entrez Gene 26396 Mouse Entrez Gene 5605 Human P36507 |
| Synonyms: | CFC4; MAPKK2; MEK2; MKK2; PRKMK2 |
| Protein Families: | Druggable Genome, Protein Kinase |



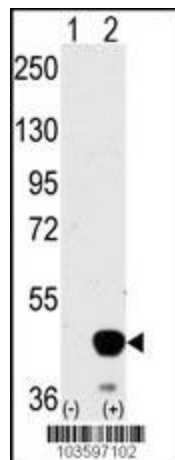
[View online »](#)

Protein Pathways:

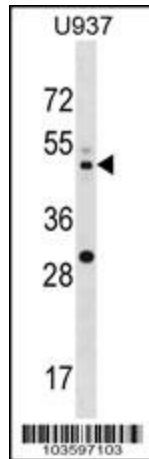
Acute myeloid leukemia, B cell receptor signaling pathway, Bladder cancer, Chronic myeloid leukemia, Endometrial cancer, ErbB signaling pathway, Fc epsilon RI signaling pathway, Gap junction, Glioma, GnRH signaling pathway, Insulin signaling pathway, Long-term depression, Long-term potentiation, MAPK signaling pathway, Melanogenesis, Melanoma, Natural killer cell mediated cytotoxicity, Neurotrophin signaling pathway, Non-small cell lung cancer, Pathways in cancer, Prion diseases, Prostate cancer, Regulation of actin cytoskeleton, Renal cell carcinoma, T cell receptor signaling pathway, Thyroid cancer, Toll-like receptor signaling pathway, Vascular smooth muscle contraction, VEGF signaling pathway

Product images:


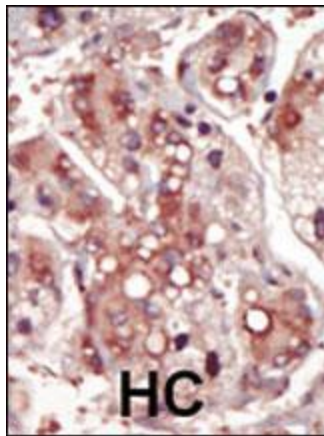
The anti-MAP2K2 Pab (Cat. #[TA325009]) is used in Western blot to detect MAP2K2 in mouse liver tissue lysate.



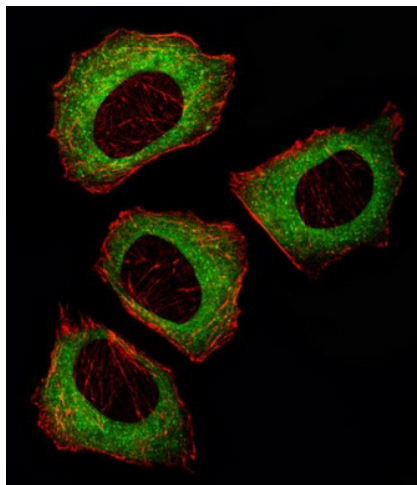
Western blot analysis of MAP2K2 (arrow) using MAP2K2 Antibody (Center) (Cat.#[TA325009]).293 cell lysates (2 ug/lane) either nontransfected (Lane 1) or transiently transfected with the MAP2K2 gene (Lane 2) (Origene Technologies).



MAP2K2 Antibody (A278) (Cat. #[TA325009]) western blot analysis in U937 cell line lysates (35ug/lane). This demonstrates the MAP2K2 antibody detected the MAP2K2 protein (arrow).



Formalin-fixed and paraffin-embedded human cancer tissue reacted with the primary antibody, which was peroxidase-conjugated to the secondary antibody, followed by DAB staining. This data demonstrates the use of this antibody for immunohistochemistry; clinical relevance has not been evaluated. BC = breast carcinoma; HC = hepatocarcinoma.



IF image of U251 cell stained with MEK2 (MAP2K2) Antibody (Center) (Cat#[TA325009]/SA110819AW). U251 cells were incubated with MEK2 primary antibody (1:25, 1 h at 37°C). For secondary antibody, Alexa Fluor® 488 conjugated donkey anti-rabbit antibody (green) was used (1:400). Cytoplasmic actin was counterstained with Alexa Fluor® 555 (red) conjugated Phalloidin (7 units/ml). MEK2 immunoreactivity is localized to Cytoplasm significantly.