

Product datasheet for **TA325008**

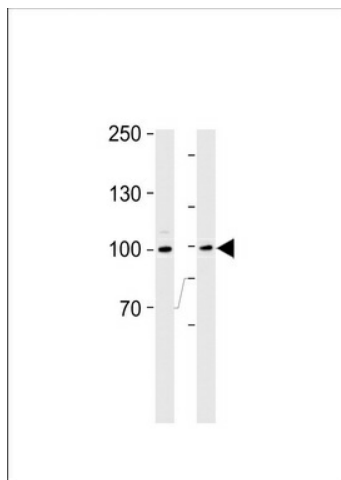
RPS6KA3 Rabbit Polyclonal Antibody

Product data:

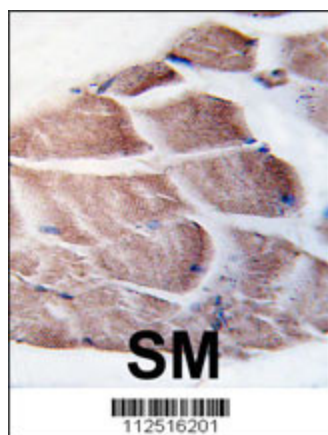
| | |
|-------------------------|--|
| Product Type: | Primary Antibodies |
| Applications: | IHC, WB |
| Recommended Dilution: | WB: 1:1000, IHC: 1:10~50 |
| Reactivity: | Human, Mouse |
| Host: | Rabbit |
| Isotype: | IgG |
| Clonality: | Polyclonal |
| Immunogen: | This RSK2 (RPS6KA3) antibody is generated from rabbits immunized with a KLH conjugated synthetic peptide between 13-42 amino acids from the N-terminal region of human RSK2 (RPS6KA3). |
| Formulation: | Purified polyclonal antibody supplied in PBS with 0.09% (W/V) sodium azide. |
| Concentration: | lot specific |
| Purification: | This antibody is prepared by Saturated Ammonium Sulfate (SAS) precipitation followed by dialysis against PBS. |
| Conjugation: | Unconjugated |
| Storage: | Store at -20°C as received. |
| Stability: | Stable for 12 months from date of receipt. |
| Predicted Protein Size: | 83736 Da |
| Gene Name: | ribosomal protein S6 kinase A3 |
| Database Link: | NP_004577 Entrez Gene 110651 Mouse Entrez Gene 6197 Human P51812 |
| Synonyms: | CLS; HU-3; ISPK-1; MAPKAPK1B; MRX19; p90-RSK2; pp90RSK2; RSK; RSK2; S6K-alpha3 |
| Protein Families: | Druggable Genome, Protein Kinase |
| Protein Pathways: | Long-term potentiation, MAPK signaling pathway, mTOR signaling pathway, Neurotrophin signaling pathway, Oocyte meiosis, Progesterone-mediated oocyte maturation |



[View online »](#)

Product images:

RSK3 Antibody (N-term) (Cat. #TA325008) western blot analysis in Ramos cell line and mouse thymus tissue lysates (35ug/lane). This demonstrates the RSK3 antibody detected the RSK3 protein (arrow).



Formalin-fixed and paraffin-embedded human skeletal muscle tissue reacted with RSK3 antibody (N-term) (Cat. #TA325008), which was peroxidase-conjugated to the secondary antibody, followed by DAB staining. This data demonstrates the use of this antibody for immunohistochemistry; clinical relevance has not been evaluated.