

Product datasheet for **TA325005S**

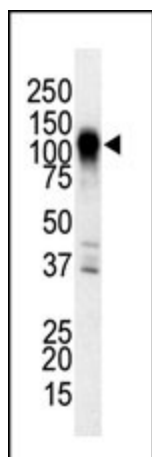
MAP3K6 Rabbit Polyclonal Antibody

Product data:

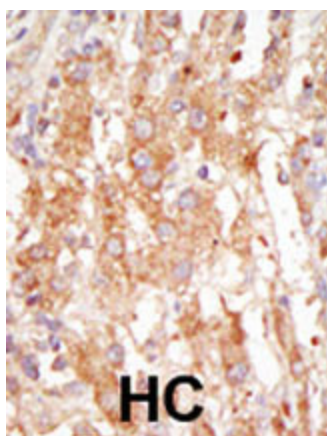
Product Type:	Primary Antibodies
Applications:	IHC, WB
Recommended Dilution:	WB: 1:1000, IHC: 1:50~100
Reactivity:	Human, Mouse
Host:	Rabbit
Isotype:	IgG
Clonality:	Polyclonal
Immunogen:	This MEKK6 antibody is generated from rabbits immunized with a KLH conjugated synthetic peptide between 1028-1058 amino acids from the C-terminal region of human MEKK6.
Formulation:	Purified polyclonal antibody supplied in PBS with 0.09% (W/V) sodium azide.
Concentration:	lot specific
Purification:	This antibody is prepared by Saturated Ammonium Sulfate (SAS) precipitation followed by dialysis against PBS.
Conjugation:	Unconjugated
Storage:	Store at -20°C as received.
Stability:	Stable for 12 months from date of receipt.
Predicted Protein Size:	142596 Da
Gene Name:	mitogen-activated protein kinase kinase kinase 6
Database Link:	NP_004663 Entrez Gene 53608 Mouse Entrez Gene 9064 Human O95382
Synonyms:	ASK2; MAPKKK6; MEKK6
Protein Families:	Druggable Genome, Protein Kinase
Protein Pathways:	MAPK signaling pathway



[View online »](#)

Product images:


The anti-MEKK6 Pab (Cat. #TA325005S) is used in Western blot to detect MEKK6 in NIH3T3 cell lysate.



Formalin-fixed and paraffin-embedded human cancer tissue reacted with the primary antibody, which was peroxidase-conjugated to the secondary antibody, followed by DAB staining. This data demonstrates the use of this antibody for immunohistochemistry; clinical relevance has not been evaluated. BC = breast carcinoma; HC = hepatocarcinoma.