

## Product datasheet for **TA325003**

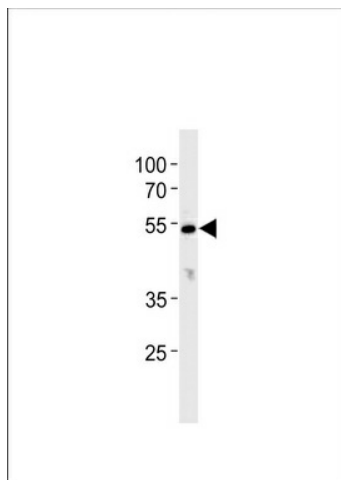
### CYP26C1 Rabbit Polyclonal Antibody

#### Product data:

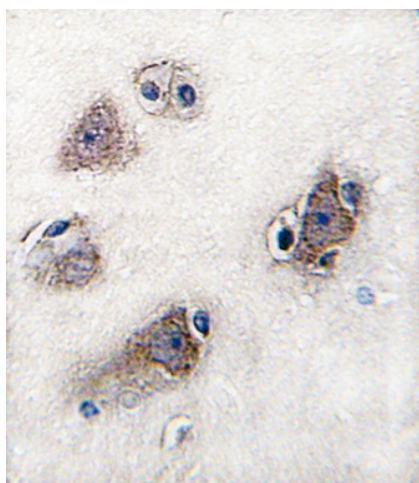
Product Type:	Primary Antibodies
Applications:	IHC, WB
Recommended Dilution:	WB: 1:1000, IHC: 1:10~50
Reactivity:	Human
Host:	Rabbit
Isotype:	IgG
Clonality:	Polyclonal
Immunogen:	This CYP26C1 antibody is generated from rabbits immunized with a KLH conjugated synthetic peptide between 410-439 amino acids from the C-terminal region of human CYP26C1.
Formulation:	Purified polyclonal antibody supplied in PBS with 0.09% (W/V) sodium azide.
Concentration:	lot specific
Purification:	This antibody is prepared by Saturated Ammonium Sulfate (SAS) precipitation followed by dialysis against PBS.
Conjugation:	Unconjugated
Storage:	Store at -20°C as received.
Stability:	Stable for 12 months from date of receipt.
Predicted Protein Size:	57111 Da
Gene Name:	cytochrome P450 family 26 subfamily C member 1
Database Link:	<a href="#">NP_899230</a> <a href="#">Entrez Gene 340665 Human</a> <a href="#">Q6V0L0</a>
Synonyms:	FFDD4
Protein Families:	Druggable Genome, Transmembrane
Protein Pathways:	Retinol metabolism



[View online »](#)

**Product images:**

CYP26C1 Antibody (C-term) (Cat. #TA325003) western blot analysis in K562 cell line lysates (35ug/lane). This demonstrates the CYP26C1 antibody detected the CYP26C1 protein (arrow).



Formalin-fixed and paraffin-embedded human brain tissue reacted with CYP26C1 antibody (C-term), which was peroxidase-conjugated to the secondary antibody, followed by DAB staining. This data demonstrates the use of this antibody for immunohistochemistry; clinical relevance has not been evaluated.