

## Product datasheet for **TA325002**

### Cytochrome P450 17A1 (CYP17A1) Rabbit Polyclonal Antibody

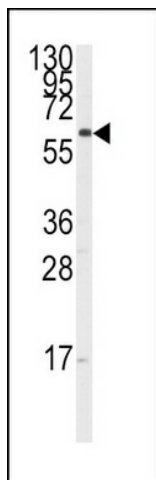
#### Product data:

Product Type:	Primary Antibodies
Applications:	IF, WB
Recommended Dilution:	IF: 1:10~50, WB: 1:1000
Reactivity:	Human (Predicted: Monkey)
Host:	Rabbit
Isotype:	IgG
Clonality:	Polyclonal
Immunogen:	This CYP17A1 antibody is generated from rabbits immunized with a KLH conjugated synthetic peptide between 358-388 amino acids from the Central region of human CYP17A1.
Formulation:	Purified polyclonal antibody supplied in PBS with 0.09% (W/V) sodium azide.
Concentration:	lot specific
Purification:	This antibody is prepared by Saturated Ammonium Sulfate (SAS) precipitation followed by dialysis against PBS.
Conjugation:	Unconjugated
Storage:	Store at -20°C as received.
Stability:	Stable for 12 months from date of receipt.
Predicted Protein Size:	57371 Da
Gene Name:	cytochrome P450 family 17 subfamily A member 1
Database Link:	<a href="#">NP_000093</a> <a href="#">Entrez Gene 678693 Monkey</a> <a href="#">Entrez Gene 1586 Human</a> <a href="#">P05093</a>
Synonyms:	CPT7; CYP17; P450C17; S17AH
Protein Families:	Druggable Genome, P450
Protein Pathways:	C21-Steroid hormone metabolism, Metabolic pathways

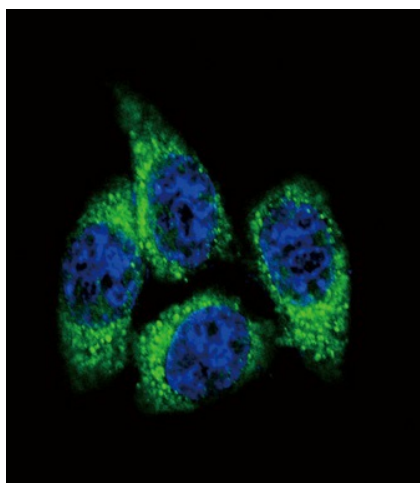


[View online »](#)

## Product images:



Western blot analysis of anti-CYP17A1 Antibody (Center) (Cat.#TA325002) in K562 cell line lysates (35ug/lane). CYP17A1 (arrow) was detected using the purified Pab.



Confocal immunofluorescent analysis of CYP17A1 Antibody (Center) (Cat. #TA325002) with HeLa cell followed by Alexa Fluor 488-conjugated goat anti-rabbit IgG (green). DAPI was used to stain the cell nuclear (blue).