

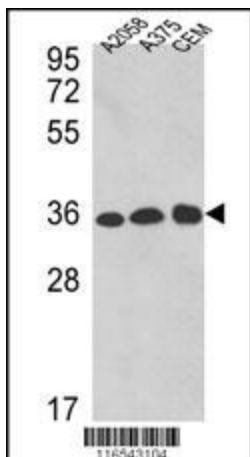
Product datasheet for **TA325001S**

GAPDH Rabbit Polyclonal Antibody

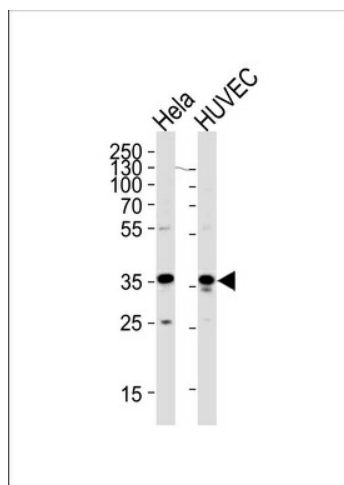
Product data:

Product Type:	Primary Antibodies
Applications:	FC, IF, IHC, WB
Recommended Dilution:	WB: 1:1000, IHC: 1:50~100, FC: 1:10~50, IF: 1:10~50
Reactivity:	Human (Predicted: Mouse, Rat, Chicken, Pig)
Host:	Rabbit
Isotype:	IgG
Clonality:	Polyclonal
Immunogen:	This GAPDH antibody is generated from rabbits immunized with a KLH conjugated synthetic peptide between 233-259 amino acids from the C-terminal region of human GAPDH.
Formulation:	Purified polyclonal antibody supplied in PBS with 0.09% (W/V) sodium azide.
Concentration:	lot specific
Purification:	This antibody is prepared by Saturated Ammonium Sulfate (SAS) precipitation followed by dialysis against PBS.
Conjugation:	Unconjugated
Storage:	Store at -20°C as received.
Stability:	Stable for 12 months from date of receipt.
Predicted Protein Size:	36053 Da
Gene Name:	glyceraldehyde-3-phosphate dehydrogenase
Database Link:	NP_002037 Entrez Gene 14433 Mouse Entrez Gene 24383 Rat Entrez Gene 2597 Human P04406
Synonyms:	G3PD; GAPD; HEL-S-162eP
Protein Families:	ES Cell Differentiation/IPS
Protein Pathways:	Alzheimer's disease, Glycolysis / Gluconeogenesis, Metabolic pathways

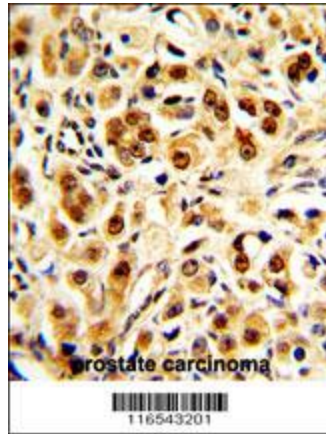

[View online »](#)

Product images:


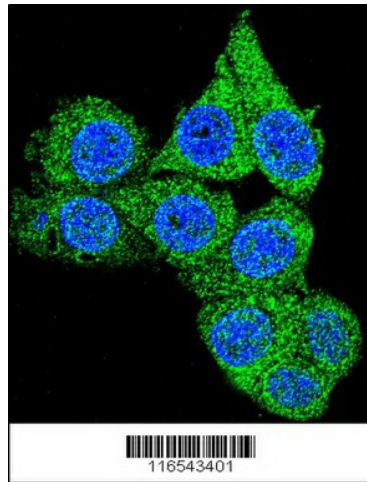
Western blot analysis of GAPDH Antibody (C-term R248) (Cat.#[TA325001]) in A2058, A375, CEM cell line lysates (35ug/lane). GAPDH (arrow) was detected using the purified Pab.



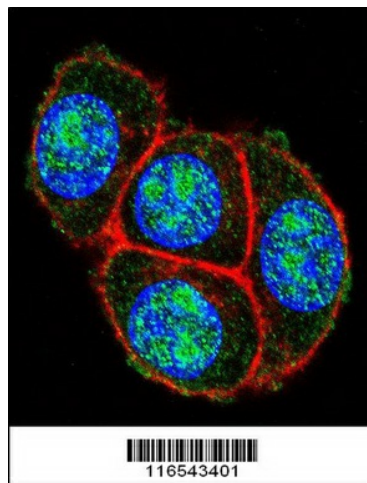
Western blot analysis of lysates from HeLa, HUVEC cell line (from left to right), using GAPDH Antibody (C-term R248) (Cat. #[TA325001]). [TA325001] was diluted at 1:1000 at each lane. A goat anti-rabbit IgG H&L (HRP) at 1:5000 dilution was used as the secondary antibody. Lysates at 35ug per lane.



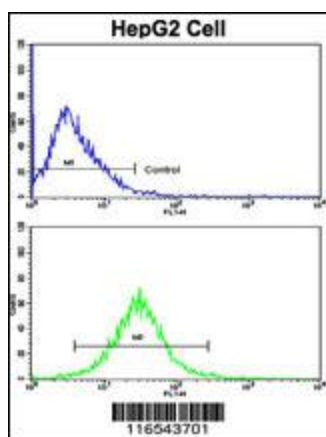
Formalin-fixed and paraffin-embedded human prostate carcinoma with GAPDH Antibody (C-term R248), which was peroxidase-conjugated to the secondary antibody, followed by DAB staining. This data demonstrates the use of this antibody for immunohistochemistry; clinical relevance has not been evaluated.



Confocal immunofluorescent analysis of GAPDH Antibody (C-term R248) (Cat#[TA325001]) with HeLa cell followed by Alexa Fluor 488-conjugated goat anti-rabbit IgG (green). DAPI was used to stain the cell nuclear (blue).



Confocal immunofluorescent analysis of GAPDH Antibody (C-term R248) (Cat#[TA325001]) with HeLa cell followed by Alexa Fluor 488-conjugated goat anti-rabbit IgG (green). Actin filaments have been labeled with Alexa Fluor 555 phalloidin (red). DAPI was used to stain the cell nuclear (blue).



Flow cytometric analysis of HepG2 cells using GAPDH Antibody (C-term R248) (bottom histogram) compared to a negative control cell (top histogram). FITC-conjugated goat-anti-rabbit secondary antibodies were used for the analysis.