

## Product datasheet for **TA325000S**

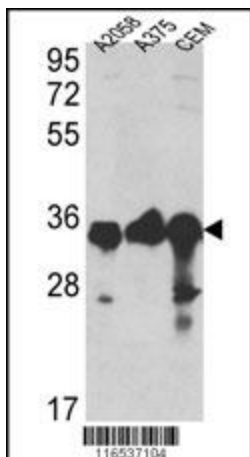
### GAPDH Rabbit Polyclonal Antibody

#### Product data:

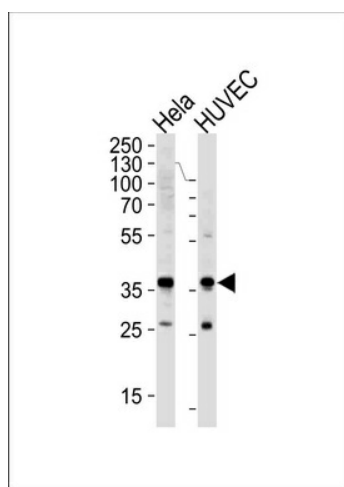
Product Type:	Primary Antibodies
Applications:	IF, IHC, WB
Recommended Dilution:	WB: 1:1000, IHC: 1:10~50, IF: 1:10~50
Reactivity:	Human
Host:	Rabbit
Isotype:	IgG
Clonality:	Polyclonal
Immunogen:	This GAPDH antibody is generated from rabbits immunized with a KLH conjugated synthetic peptide between 62-91 amino acids from the N-terminal region of human GAPDH.
Formulation:	Purified polyclonal antibody supplied in PBS with 0.09% (W/V) sodium azide.
Concentration:	lot specific
Purification:	This antibody is prepared by Saturated Ammonium Sulfate (SAS) precipitation followed by dialysis against PBS.
Conjugation:	Unconjugated
Storage:	Store at -20°C as received.
Stability:	Stable for 12 months from date of receipt.
Predicted Protein Size:	36053 Da
Gene Name:	glyceraldehyde-3-phosphate dehydrogenase
Database Link:	<a href="#">NP_002037</a> <a href="#">Entrez Gene 2597 Human</a> <a href="#">P04406</a>
Synonyms:	G3PD; GAPD; HEL-S-162eP
Protein Families:	ES Cell Differentiation/IPS
Protein Pathways:	Alzheimer's disease, Glycolysis / Gluconeogenesis, Metabolic pathways



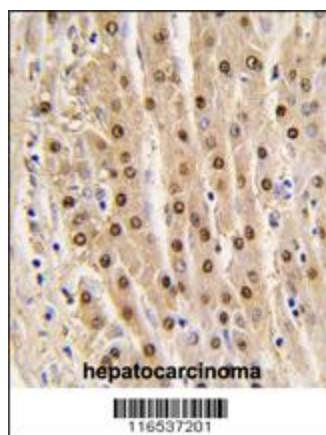
[View online »](#)

**Product images:**


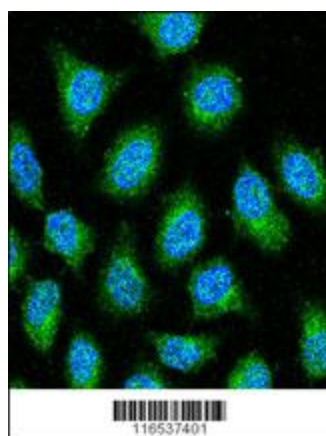
Western blot analysis of GAPDH Antibody (N-term) (Cat.#[TA325000]) in A2058, A375, CEM cell line lysates (35ug/lane). GAPDH (arrow) was detected using the purified Pab.



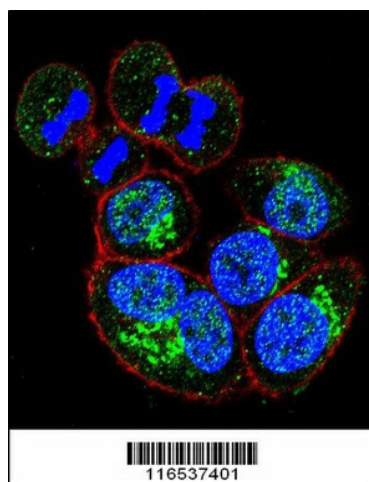
Western blot analysis of lysates from HeLa, HUVEC cell line (from left to right), using GAPDH Antibody (N-term) (Cat. #[TA325000]).[TA325000] was diluted at 1:1000 at each lane. A goat anti-rabbit IgG H&L (HRP) at 1:5000 dilution was used as the secondary antibody. Lysates at 35ug per lane.



Formalin-fixed and paraffin-embedded human hepatocarcinoma tissue reacted with GAPDH antibody (N-term), which was peroxidase-conjugated to the secondary antibody, followed by DAB staining. This data demonstrates the use of this antibody for immunohistochemistry; clinical relevance has not been evaluated.



GAPDH Antibody (N-term) (Cat. # [TA325000]) confocal immunofluorescent analysis with Hela cell. 0.025 mg/ml primary antibody was followed by FITC-conjugated goat anti-rabbit IgG (whole molecule). FITC emits green fluorescence. DAPI was used to stain the cell nuclear (blue).



Confocal immunofluorescent analysis of GAPDH Antibody (N-term) (Cat#[TA325000]) with Hela cell followed by Alexa Fluor 488-conjugated goat anti-rabbit IgG (green). Actin filaments have been labeled with Alexa Fluor 555 phalloidin (red). DAPI was used to stain the cell nuclear (blue).