

## Product datasheet for **TA324997S**

### HSP90AB1 Rabbit Polyclonal Antibody

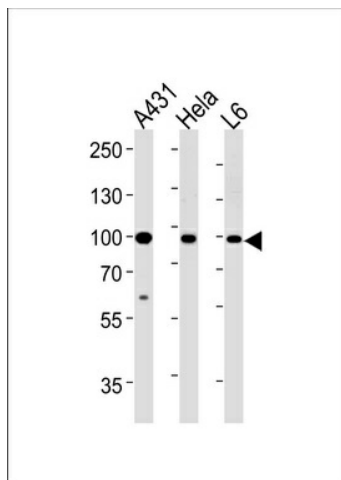
#### Product data:

Product Type:	Primary Antibodies
Applications:	FC, IHC, WB
Recommended Dilution:	WB: 1:1000, IHC: 1:50~100, FC: 1:10~50
Reactivity:	Human (Predicted: Mouse, Rat, Bovine, Chicken, Monkey)
Host:	Rabbit
Isotype:	IgG
Clonality:	Polyclonal
Immunogen:	This HSP90AB1 antibody is generated from rabbits immunized with a KLH conjugated synthetic peptide between 438-465 amino acids from the Central region of human HSP90AB1.
Formulation:	Purified polyclonal antibody supplied in PBS with 0.09% (W/V) sodium azide.
Concentration:	lot specific
Purification:	This antibody is prepared by Saturated Ammonium Sulfate (SAS) precipitation followed by dialysis against PBS.
Conjugation:	Unconjugated
Storage:	Store at -20°C as received.
Stability:	Stable for 12 months from date of receipt.
Predicted Protein Size:	83264 Da
Gene Name:	heat shock protein 90kDa alpha family class B member 1
Database Link:	<a href="#">NP_031381</a> <a href="#">Entrez Gene 15516 Mouse</a> <a href="#">Entrez Gene 301252 Rat</a> <a href="#">Entrez Gene 702293 Monkey</a> <a href="#">Entrez Gene 3326 Human</a> <a href="#">P08238</a>
Synonyms:	D6S182; HSP84; HSP90B; HSPC2; HSPCB
Protein Families:	Druggable Genome, Stem cell - Pluripotency
Protein Pathways:	Antigen processing and presentation, NOD-like receptor signaling pathway, Pathways in cancer, Progesterone-mediated oocyte maturation, Prostate cancer

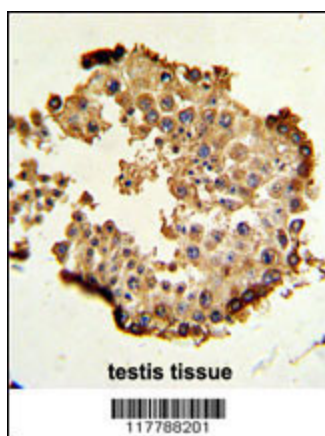


[View online »](#)

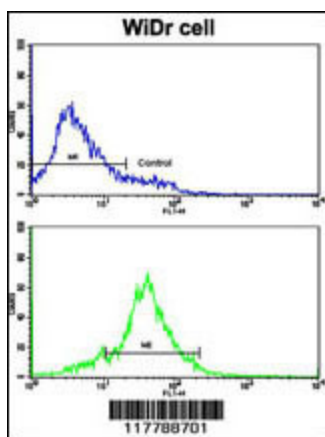
Product images:



HSP90AB1 Antibody (Center) (Cat.# [TA324997]) western blot analysis in A431, HeLa, L6 cell line lysates (35ug/lane). This demonstrates the HSP90AB1 antibody detected the HSP90AB1 protein (arrow).



Formalin-fixed and paraffin-embedded human testis tissue reacted with HSP90AB1 Antibody (Center), which was peroxidase-conjugated to the secondary antibody, followed by DAB staining. This data demonstrates the use of this antibody for immunohistochemistry; clinical relevance has not been evaluated.



Flow cytometric analysis of WiDr cells using HSP90AB1 Antibody (Center) (bottom histogram) compared to a negative control cell (top histogram). FITC-conjugated goat-anti-rabbit secondary antibodies were used for the analysis.