

Product datasheet for **TA324996S**

HSP90AB1 Rabbit Polyclonal Antibody

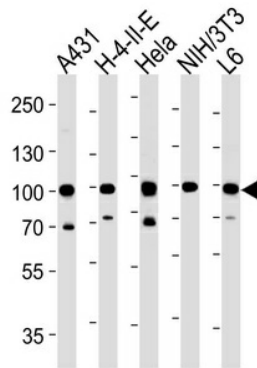
Product data:

Product Type:	Primary Antibodies
Applications:	FC, IHC, WB
Recommended Dilution:	WB: 1:1000, IHC: 1:50~100, FC: 1:10~50
Reactivity:	Human (Predicted: Mouse, Rat, Bovine, Monkey)
Host:	Rabbit
Isotype:	IgG
Clonality:	Polyclonal
Immunogen:	This HSP90AB1 antibody is generated from rabbits immunized with a KLH conjugated synthetic peptide between 697-724 amino acids from the C-terminal region of human HSP90AB1.
Formulation:	Purified polyclonal antibody supplied in PBS with 0.09% (W/V) sodium azide.
Concentration:	lot specific
Purification:	This antibody is prepared by Saturated Ammonium Sulfate (SAS) precipitation followed by dialysis against PBS.
Conjugation:	Unconjugated
Storage:	Store at -20°C as received.
Stability:	Stable for 12 months from date of receipt.
Predicted Protein Size:	83264 Da
Gene Name:	heat shock protein 90kDa alpha family class B member 1
Database Link:	NP_031381 Entrez Gene 15516 Mouse Entrez Gene 301252 Rat Entrez Gene 702293 Monkey Entrez Gene 3326 Human P08238
Synonyms:	D6S182; HSP84; HSP90B; HSPC2; HSPCB
Protein Families:	Druggable Genome, Stem cell - Pluripotency
Protein Pathways:	Antigen processing and presentation, NOD-like receptor signaling pathway, Pathways in cancer, Progesterone-mediated oocyte maturation, Prostate cancer

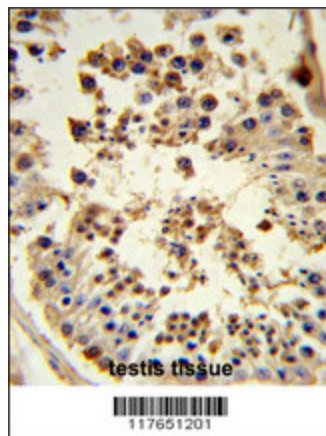


[View online »](#)

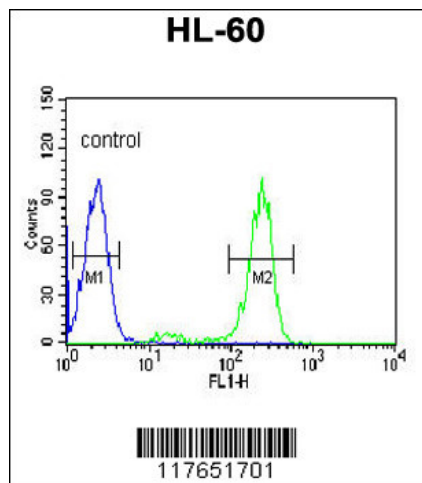
Product images:



HSP90AB1 Antibody (C-term) (Cat.# [TA324996]) western blot analysis in A431, H-4-II-E, HeLa, mouse NIH/3T3, rat L6 cell line lysates (35ug/lane). This demonstrates the HSP90AB1 antibody detected the HSP90AB1 protein (arrow).



Formalin-fixed and paraffin-embedded human testis tissue reacted with HSP90AB1 Antibody (C-term), which was peroxidase-conjugated to the secondary antibody, followed by DAB staining. This data demonstrates the use of this antibody for immunohistochemistry; clinical relevance has not been evaluated.



HSP90AB1 Antibody (C-term) (Cat. # [TA324996]) flow cytometric analysis of HL-60 cells (right histogram) compared to a negative control cell (left histogram). FITC-conjugated goat-anti-rabbit secondary antibodies were used for the analysis.