

## Product datasheet for **TA324994**

### Acetylcholinesterase (ACHE) Rabbit Polyclonal Antibody

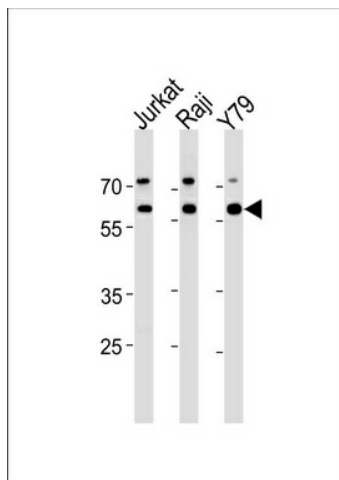
#### Product data:

|                         |  |
|-------------------------|--|
| Product Type:           | Primary Antibodies   |
| Applications:           | FC, IF, IHC, WB  |
| Recommended Dilution:   | WB: 1:1000, IHC: 1:10~50, FC: 1:10~50, IF: 1:10~50   |
| Reactivity:             | Human  |
| Host:                   | Rabbit   |
| Isotype:                | IgG  |
| Clonality:              | Polyclonal   |
| Immunogen:              | This ACHE antibody is generated from rabbits immunized with a KLH conjugated synthetic peptide between 147-175 amino acids from the N-terminal region of human ACHE. |
| Formulation:            | Purified polyclonal antibody supplied in PBS with 0.09% (W/V) sodium azide.  |
| Concentration:          | lot specific   |
| Purification:           | This antibody is prepared by Saturated Ammonium Sulfate (SAS) precipitation followed by dialysis against PBS.  |
| Conjugation:            | Unconjugated   |
| Storage:                | Store at -20°C as received.  |
| Stability:              | Stable for 12 months from date of receipt.   |
| Predicted Protein Size: | 67796 Da   |
| Gene Name:              | acetylcholinesterase (Cartwright blood group)  |
| Database Link:          | <a href="#">NP_000656</a><br><a href="#">Entrez Gene 43 Human</a><br><a href="#">P22303</a>  |
| Synonyms:               | ACEE; ARACHE; N-ACHE; YT   |
| Protein Families:       | Druggable Genome   |
| Protein Pathways:       | Glycerophospholipid metabolism   |

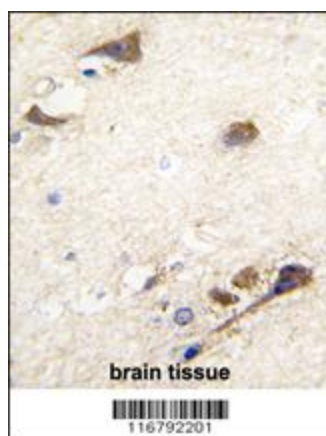


[View online »](#)

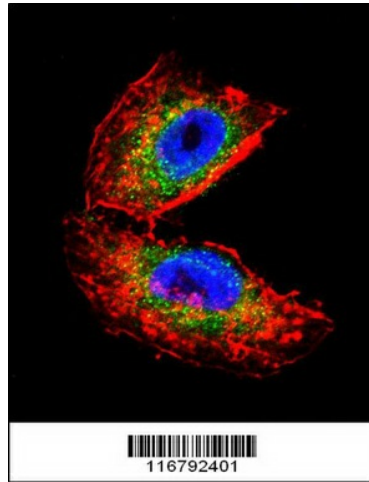
## Product images:



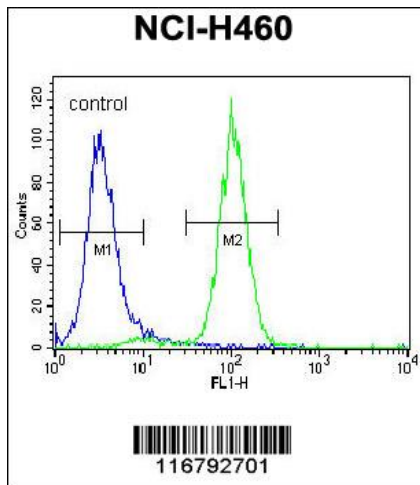
ACHE Antibody (N-term) (Cat. #TA324994) western blot analysis in Jurkat, Raji, Y79 cell line lysates (35ug/lane). This demonstrates the ACHE antibody detected the ACHE protein (arrow).



Formalin-fixed and paraffin-embedded human brain tissue reacted with ACHE antibody (N-term), which was peroxidase-conjugated to the secondary antibody, followed by DAB staining. This data demonstrates the use of this antibody for immunohistochemistry; clinical relevance has not been evaluated.



Confocal immunofluorescent analysis of ACHE Antibody (N-term) (Cat#TA324994) with NCI-H460 cell followed by Alexa Fluor 488-conjugated goat anti-rabbit IgG (green). Actin filaments have been labeled with Alexa Fluor 555 phalloidin (red). DAPI was used to stain the cell nuclear (blue).



ACHE Antibody (N-term) (Cat. #TA324994) flow cytometric analysis of NCI-H460 cells (right histogram) compared to a negative control cell (left histogram). FITC-conjugated goat-anti-rabbit secondary antibodies were used for the analysis.